



Make your

**SUMMER**

even better

Brand-name parasols & accessories  
**2025 Catalogue**

# Your competent & reliable partner



## Outstanding quality, fair prices

The brand "Schneider Schirme" embodies carefully selected materials and an attractive design.

These characteristics ensure that our products will always operate flawlessly. Various institutions have consistently attested to this quality over the years.



## More than 150 years of experience

Established in 1868, our company is owned and operated in the 5th generation and has always managed to adapt to the needs of the times.

This know-how and experience have made us one of the market leaders in Europe.



Annex building adding 6,000 sqm of space to the company headquarters in Mengen - occupied since



## Eye-catching displays at the POS

With sales displays for parasols, shade sails, accessories and parasol stands, we support retailers in their presentation of our products at the point of sale.



## Complete line for every need

Whether you need standard, large, restaurant or professional parasols, in small or large quantities, single-colour or printed, Schneider Schirme is your ideal partner.



## Rooted in the region, connected world-wide

Investments in our production and storage facilities in the south of Germany and the expansion of international relations are key contributors to our success and guarantee optimal merchandise supply. The commitment to our home location, quality and customer proximity is as strong as ever.



February of 2022

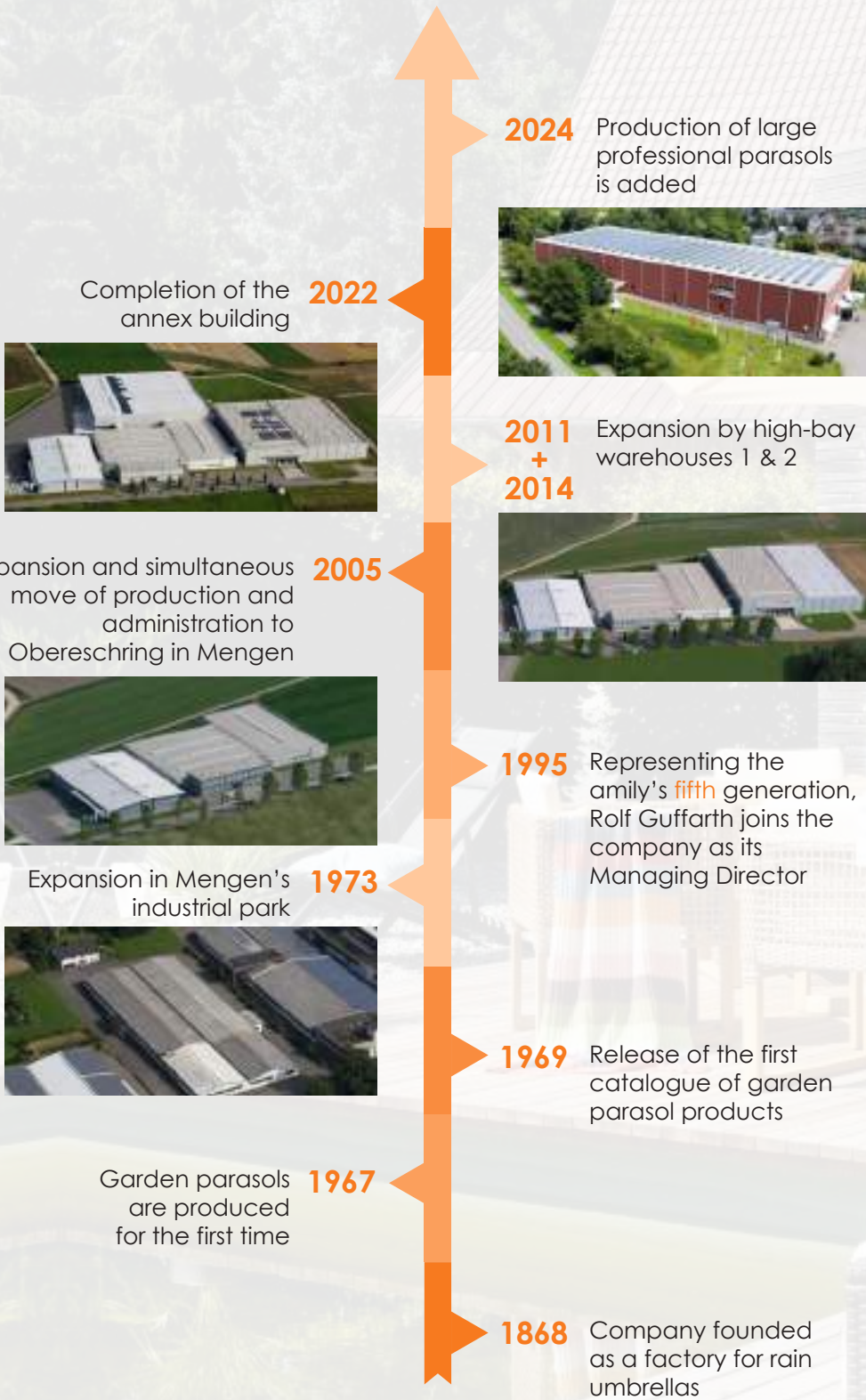


## Effective UV protection

Since responsible protection against UV radiation has been a great concern of ours from the start, all of our parasols are always certified in accordance with international standards.



For more than 150 years



**2024** Production of large professional parasols is added



Completion of the annex building **2022**



**2011 + 2014** Expansion by high-bay warehouses 1 & 2



Expansion and simultaneous move of production and administration to Obereschring in Mengen **2005**



**1995** Representing the family's fifth generation, Rolf Guffarth joins the company as its Managing Director

Expansion in Mengen's industrial park **1973**



**1969** Release of the first catalogue of garden parasol products

Garden parasols are produced for the first time **1967**

**1868** Company founded as a factory for rain umbrellas





**SCHNEIDER**  
Premium



Page 6 - 13



**SCHNEIDER**  
Classics



Page 14 - 49



**SCHNEIDER**  
GREEN STYLE



Page 50 - 51



**SCHNEIDER**  
SUNNY



Page 52 - 57



**SCHNEIDER**  
Sonnensegel



Page 58 - 63



**SCHNEIDER**  
Zubehör



Page 64 - 77



**SCHNEIDER**  
Displays



Page 78 - 79



**SCHNEIDER**  
Premium

## NEW in the Premium segment:

Attractive design and ergonomic form, combined with stylish colours, give the Premium segment its own special appearance!



### Santorini

325 x 325 cm

(page 11)



# Aquila

200 cm Ø  
Art. no. 753-..

250 cm Ø  
Art. no. 754-..



### Canopy:

100 % polyester,  
ca. 220 g/m<sup>2</sup>, rot-proof,  
water-repellent impregnation,  
with structured surface,  
with valance, with band trim

### Frame:

anthracite powder-coated  
steel frame,  
metal tilt mechanism with button,  
slider, locking knob and top feature a  
2-colour "soft-grip" design,  
two-part pole 22/25 mm for size  
200 cm Ø, two-part pole 27/30 mm  
for size 250 cm Ø



Premium top with soft grip



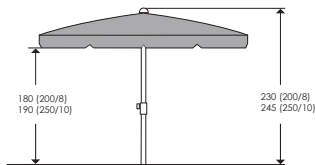
Premium slider with soft grip



Metal tilt  
mechanism  
with button

Premium  
locking knob  
with soft grip

Dimensions (cm):



ecru



gold yellow



terracotta



dark red

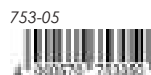
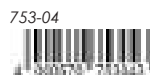
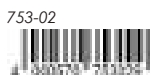


green

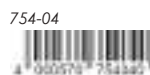


silver grey

ca.  
200 cm Ø



ca.  
250 cm Ø



# Aquila

225 x 120 cm

265 x 150 cm

Art. no. 755-...

Art. no. 756-...



Premium top with soft grip



Ribs of sturdy fibreglass



Metal tilt mechanism with button



Premium locking knob with soft grip

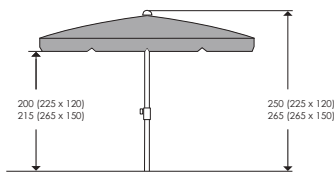
## Canopy:

100 % polyester,  
ca. 220 g/m<sup>2</sup>, rot-proof,  
water-repellent impregnation,  
with structured surface,  
with valance, with band trim

## Frame:

anthracite powder-coated  
steel frame,  
metal tilt mechanism with button,  
slider, locking knob and top feature  
a 2-colour "soft-grip" design,  
two-part pole 27/30 mm  
ribs of sturdy fibreglass

Dimensions (cm):



ecru



gold yellow



terracotta



dark red



green



silver grey

ca.  
225 x 120  
cm



ca.  
265 x 150  
cm





# Bermuda

350 cm Ø

Art. no. 733-..



### Canopy:

100 % polyester,  
ca. 200 g/m<sup>2</sup>, rot-proof,  
water-repellent impregnation,  
highly fade-resistant,  
without valance, with air vent,  
removable for washing by hand,  
includes light-proof  
protective cover with zip and  
rod

### Frame:

silver grey powder-coated  
aluminium/steel frame, top joint,  
cast aluminium handle and crown,  
ca. 18 x 26 mm ribs, one-part pole  
ca. 55 x 86 mm, includes cross base for  
50 x 50 x 5 cm paving slabs  
(slabs not included)

### Adjustable in 3 dimensions:

1. Rotary plate for rotating 360° with foot pedal
2. Tilts up to 50° along the pole
3. Can be tilted on both sides up to 45° along the radial arm (by handle)

**TIP:** For matching accessories, please refer to page 66 - 69

Sturdy parasol mount



Pivoting parasol canopy

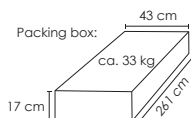
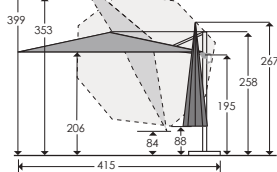


Handle for opening, inclining and tilting



Solid rotary joint with foot pedal

Dimensions (cm)  
for size 350 cm Ø:



Application video



Assembly instructions



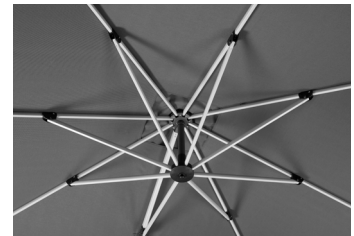
ca.  
350 cm Ø



PREMIUM

# Monaco

300 x 300 cm  
Art. no. 776-15



Sturdy parasol frame



Rib joints



Crank mechanism integrated in handle

Solid rotary joint with foot pedal

## Canopy:

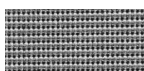
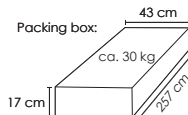
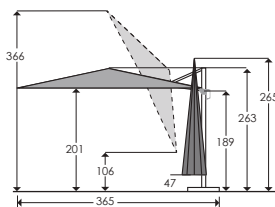
100 % polyester,  
ca. 280 g/m<sup>2</sup>, rot-proof,  
water-repellent impregnation,  
highly fade-resistant, without  
valance,  
with air vent, removable for  
washing by hand, includes light-  
proof protective cover with  
zip and rod

## Frame:

silver grey powder-coated  
aluminium/steel frame,  
ribs 17 x 25 mm,  
one-part pole 55 x 86 mm,  
rotary plate for rotating 360°  
with foot pedal, tilting, includes cross  
base for 50 x 50 x 5 cm paving slabs  
(slabs not included)

**TIP:** For matching accessories, please refer to page 66 - 69

Dimensions (cm):



granite grey

776-15

ca.  
300 x 300 cm



Application video



Assembly instructions



# Santorini

325 x 325 cm

Art. no. 1000-1501

 **SCHNEIDER**  
Premium



## Canopy:

100 % polyester,  
ca. 200 g/m<sup>2</sup>, rot-proof,  
water-repellent impregnation,  
highly fade-resistant, with air  
vent,  
removable for washing by hand,  
includes light-proof  
protective cover with zip  
and rod

## Frame:

anodised aluminium frame,  
two-part pole with sturdy  
screw connection 48 mm Ø,  
ribs ca. 14 x 24 mm,  
crank to open



Sturdy parasol frame



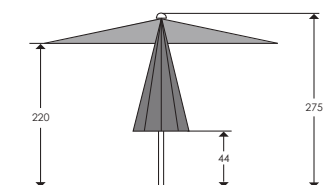
Rib joints



Spring end  
pieces

Very sturdy screw  
connection

Dimensions (cm):



anthracite

1000-1501



ca.  
325 x 325 cm

PREMIUM

# Gemini

360 cm Ø

Art. no. 644-..

 **SCHNEIDER**  
Premium



## Canopy:

100 % polyester,  
ca. 220 g/m<sup>2</sup>, rot-proof,  
water-repellent impregnation,  
without valance, with large air  
vent,  
with structured surface,  
removable for washing by hand

## Frame:

silver grey powder-coated  
aluminium frame,  
with fine line structure,  
two-part pole 48 mm Ø,  
ribs 12 x 18 mm, crank,  
all components in  
two-colour design



Finishing top



Large air vent (air outlet)

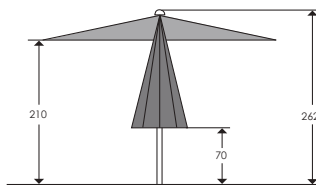


Sturdy slider



Premium crank

Dimensions (cm):



ecru

644-02



dark red

644-07



anthracite

644-15



ca.  
360 cm Ø

# Premium protective covers



## PREMIUM protective covers

High-quality protective parasol covers for your PREMIUM parasols. Made of durable, water-proof and light-proof special polyester fabric. The drawstring features a stopper for closing the protective cover at the bottom to prevent insects and mice from building nests (except 321-00).

The sizes for 300 cm Ø and larger also feature a zip and telescoping rod for convenient covering of the closed parasol, without having to remove it from the parasol stand.

Sizes 400 cm Ø and larger also come with an air vent for improved air circulation.

Packaged in a sturdy zip bag with a carrying strap, which can also be used for storage.

Packaging unit: 6 items



145 x 20/25 cm 321-00 for parasols up to 200 cm Ø and 225 x 120 cm



183 x 25/35 cm 322-00 for parasols up to 300 cm Ø, with zip and rod



250 x 27/45 cm 323-00 for parasols up to 400 cm Ø and 300 x 300 cm, with zip, rod and air vent



240 x 57 cm 324-00 for hanging parasols up to 400 cm Ø and 300 x 300 cm and 350 x 260 cm, with zip, rod and air vent





CLASSICS



## NEW in the Classics segment:

Schneider parasols fulfil stringent requirements at reasonable prices. Tested materials and standardised manufacturing processes guarantee consistent quality – and the customer is grateful for that!



**Tarifa**

270 cm Ø  
(page 21)

# Locarno

150 cm Ø 200 cm Ø 220 cm Ø 180 x 120 cm

Art. no. 715-.. Art. no. 716-.. Art. no. 717-.. Art. no. 718-..



Ball top



Large slider with button



Metal tilt mechanism with button



Locking knob

### Canopy:

100 % polyester,  
ca. 160 g/m<sup>2</sup>, rot-proof,  
water-repellent impregnation,  
with band trim,  
150 cm Ø, 200 cm Ø,  
180 x 120 cm with valance  
220 cm Ø without valance

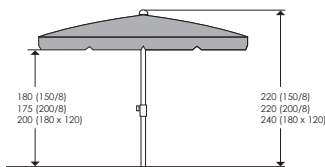
### Frame:

silver grey powder-coated steel frame,  
all plastic parts anthracite grey,  
large slider with button,  
locking knob, ball top,  
metal tilt mechanism with button,  
two-part pole, 22/25 mm Ø

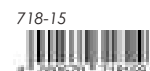
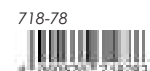
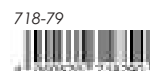
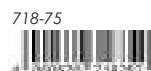
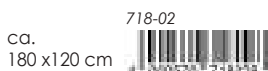
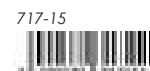
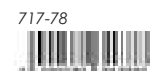
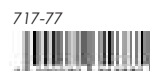
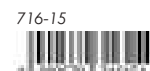
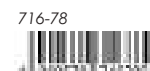
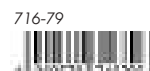
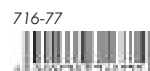
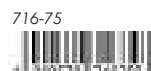
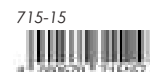
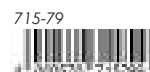
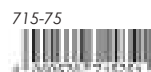
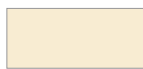
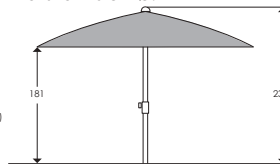
CLASSICS



Dimensions (cm) with valance:



Dimensions (cm) without valance for size 220 cm Ø:







**Canopy:**

100 % polyester,  
 ca. 150 g/m<sup>2</sup>, rot-proof,  
 water-repellent impregnation,  
 with valance,  
 with band trim

**Frame:**

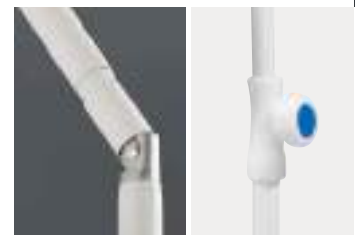
white powder-coated steel frame,  
 two-part pole 22/25 mm Ø,  
 metal tilt mechanism,  
 lower pole with locking knob



Top



Slider with button

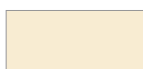
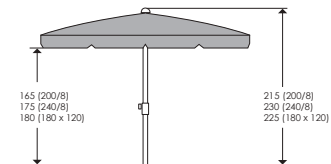


Metal tilt mechanism

Lower pole with locking knob



Dimensions (cm):



ecru



gold yellow



terracotta



blue



anthracite

ca. 200 cm Ø  
 680-02

680-04

680-05

680-09

680-15

ca. 240 cm Ø  
 681-02

681-04

681-05

681-09

681-15

ca. 180 x 120 cm  
 682-02

682-04

682-05

682-09

682-15

# Bilbao

220 cm Ø 210 x 130 cm  
 Art. no. 620-.. Art. no. 621-..



By "continued turning" of the crank the parasol tilts to provide optimal shade



Frame anthracite grey power-coated



Automatic tilt mechanism



Crank

## Canopy:

100 % polyester, ca. 180 g/m<sup>2</sup>, rot-proof, water-repellent impregnation, without valance, with air vent, removable for washing by hand

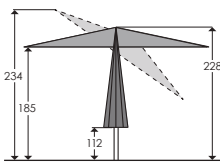
## Frame:

anthracite grey powder-coated steel frame with automatic tilt mechanism, two-part pole ca. 38 mm Ø, ribs ca. 12 x 18 mm, crank to open

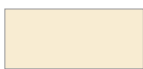
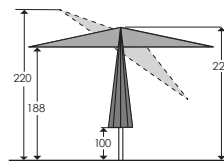
CLASSICS



Dimensions (cm) for size 220 cm Ø:



Dimensions (cm) for size 210 x 130 cm:



ecru



apple green



silver grey

ca. 220 cm Ø



620-02



620-78



620-14

ca. 210 x 130 cm



621-02



621-78



621-14

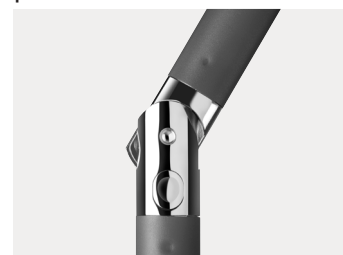
# Harlem

270 cm Ø

Art. no. 640-..



Frame anthracite grey  
power-coated



Metal tilt mechanism



Crank

## Canopy:

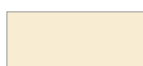
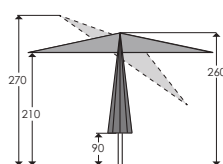
100 % polyester,  
ca. 180 g/m<sup>2</sup>, rot-proof,  
water-repellent impregnation,  
without valance, with air vent,  
removable for washing by hand

## Frame:

anthracite grey powder-coated  
steel frame,  
ribs ca. 12 x 18 mm,  
crank, metal tilt mechanism,  
two-part pole 38 mm Ø,  
ball top



Dimensions (cm):



ecru

640-02



ca.  
270 cm Ø



mandarin

640-75



red

640-77



apple green

640-78



silver grey

640-14



# Orlando

270 cm Ø

Art. no. 783-..

 **SCHNEIDER**  
Classics



By "continued turning" of the crank the parasol tilts to provide optimal shade



Automatic tilt mechanism...



...with convenient crank



Crank

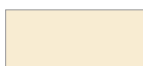
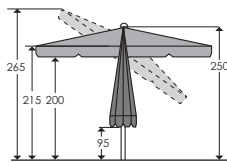
## Canopy:

100 % polyester,  
ca. 180 g/m<sup>2</sup>, rot-proof,  
water-repellent  
impregnation, with valance,  
with air vent,  
removable for washing by hand

## Frame:

anthracite grey powder-coated  
aluminium/steel frame  
with automatic tilt mechanism,  
easy to operate by crank,  
crank housing in attractive design,  
two-part pole 38 mm Ø,  
ribs ca. 14 x 20 mm

Dimensions (cm):



ecru

783-02



4 000570 783026



red

783-06



4 000570 783064



silver grey

783-14



4 000570 783149

ca.  
270 cm Ø

# Tarifa

270 cm Ø  
Art. no. 1005-..

 **SCHNEIDER**  
Classics

*New*

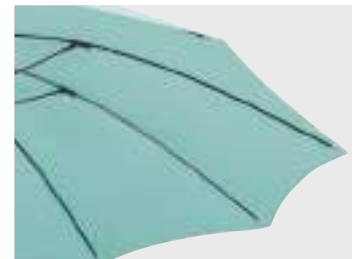
Ribs of sturdy fibreglass



Height-adjustable up to 65 cm



Top



Ribs of sturdy fibreglass



Tilt mechanism

Locking knob

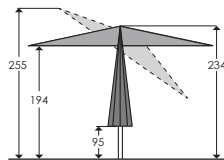
## Canopy:

100 % polyester,  
ca. 180 g/m<sup>2</sup>, rot-proof,  
water-repellent impregnation,  
highly fade-resistant,  
with air vent,  
removable for washing by hand

## Frame:

anthracite grey powder-coated  
steel frame,  
two-part pole 34/38 mm Ø,  
ribs of sturdy fibreglass 7 mm Ø,  
metal tilt mechanism, locking knob,  
Height-adjustable up to 65 cm

Dimensions (cm):



apricot



mint

ca.  
270 cm Ø

1005-1801



1005-9001



# Venedig

270 cm Ø

Art. no. 683-..

**SCHNEIDER**  
Classics



Round ribs and ...



... black plastic parts ...



... provide for an elegant structure



Crank

## Canopy:

100 % polyester,  
ca. 180 g/m<sup>2</sup>, rot-proof,  
water-repellent impregnation,  
without valance, with air vent,  
removable for washing by hand

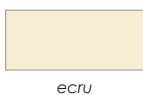
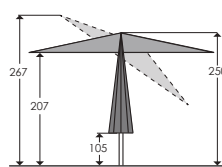
## Frame:

silver grey powder-coated  
aluminium frame,  
round ribs with 16 mm Ø,  
crank, metal tilt mechanism,  
two-part pole 38 mm Ø

Also  
available  
with recycled  
canopy  
(see page 51)



Dimensions (cm):



683-02



683-77



683-09



683-15



ca.  
270 cm Ø

# Sevilla

270 cm Ø    240 x 140 cm  
 Art. no. 664-..    Art. no. 667-..



Rods



Sturdy metal tilt mechanism



Locking knob

### Canopy:

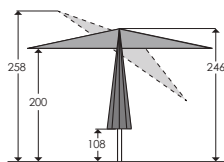
100 % polyester,  
 ca. 180 g/m<sup>2</sup>, rot-proof,  
 water-repellent impregnation,  
 without valance, with air vent,  
 removable for washing by hand

### Frame:

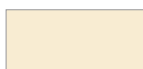
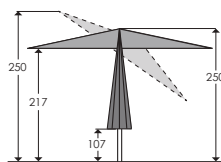
anthracite grey powder-coated steel  
 frame with push-up opening,  
 ribs ca. 12 x 18 mm, metal tilt mecha-  
 nism,  
 height-adjustable up to 60 cm,  
 two-part pole,  
 upper pole ca. 38 mm Ø,  
 lower pole ca. 34 mm Ø



Dimensions (cm)  
 for size 270 cm Ø:



Dimensions (cm)  
 for size 240 x 140 cm:



ecru



red



silver grey

ca.  
 270 cm Ø



ca.  
 240 x 140 cm



# Tunis

270 x 150 cm

Art. no. 742-...



By "continued turning" of the crank the parasol tilts to provide optimal shade



Rib joints



Frame anthracite grey power-coated



Automatic tilt mechanism

Crank

### Canopy:

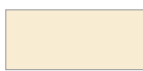
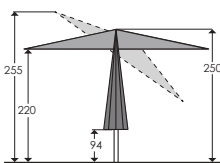
100 % polyester,  
ca. 180 g/m<sup>2</sup>, rot-proof,  
water-repellent impregnation,  
highly fade-resistant,  
without valance, with air vent,  
removable for washing by hand

### Frame:

anthracite grey powder-coated  
steel frame,  
two-part pole 38 mm Ø,  
ca. 12 x 18 mm ribs,  
crank to open,  
Automatic tilt mechanism



Dimensions (cm):



ecru

742-02



mandarin

742-75



red

742-77



apple green

742-78



anthracite

742-15



ca.  
270 x 150 cm

4 000570 742023

4 000570 742757

4 000570 742777

4 000570 742788

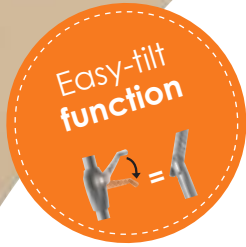
4 000570 742153



# Porto

300 x 200 cm

Art. no. 643-..



By "continued turning" of the crank the parasol tilts to provide optimal shade

### Canopy:

100 % polyester,  
ca. 180 g/m<sup>2</sup>, rot-proof,  
water-repellent impregnation,  
without valance, with air vent,  
removable for washing by hand

### Frame:

silver grey powder-coated  
steel frame,  
two-part pole 38 mm Ø,  
ca. 12 x 18 mm ribs,  
crank to open,  
automatic tilt mechanism



Rib joints



Frame silver-grey powder-coated

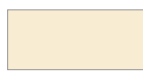
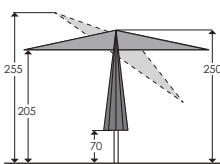


Automatic tilt mechanism

Crank



Dimensions (cm):



ecru



red



anthracite

ca.  
300 x 200 cm

643-02



643-77



643-15



# Oslo

300 x 200 cm

Art. no. 752-..

 **SCHNEIDER**  
Classics



Frame: white powder-coated



Metal tilt mechanism



Crank

### Canopy:

100 % polyester,  
ca. 180 g/m<sup>2</sup>, rot-proof,  
water-repellent impregnation,  
with valance, with air vent,  
band trim,  
removable for washing by hand

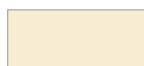
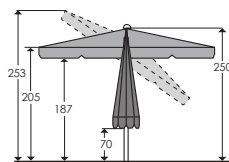
### Frame:

white powder-coated  
steel frame,  
ribs ca. 12 x 18 mm,  
crank, metal tilt mechanism,  
two-part pole 38 mm Ø

CLASSICS



Dimensions (cm):



ecru

752-02



4 000570 752022



terracotta

752-05



4 000570 752053



blue

752-09



4 000570 752091



green

752-11



4 000570 752114

ca.  
300 x 200 cm

# Rooftop

350 cm Ø

Art. no. 677-..

 **SCHNEIDER**  
Classics



## Canopy:

100 % polyester,  
ca. 220 g/m<sup>2</sup>, rot-proof,  
water-repellent impregnation,  
without valance,  
with large air vent,  
removable for washing by hand,  
each segment fastened individually along the entire length of the rib for an optimum connection with the parasol frame,  
includes light-proof protective cover with zip and rod

## Frame:

silver grey powder-coated aluminium frame,  
two-part pole 55 mm Ø,  
ribs ca. 20 x 30 mm,  
crank to open,  
includes cross base for  
8 paving slabs 40 x 40 x 5 cm  
(slabs not included)



Large air vent



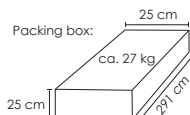
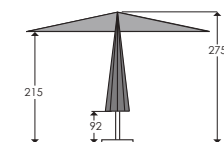
Fastening along the entire length of the rib



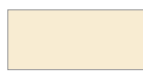
Sturdy aluminium frame



Dimensions (cm):



**Sturdy parasol**  
for windy balconies  
or roof terraces



ecru



silver grey

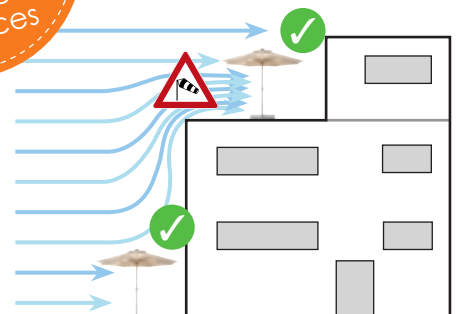
677-02



677-14



ca.  
350 cm Ø



# Cordoba

270 cm Ø    230 x 150 cm

Art. no. 689-..    Art. no. 688-..



Steel frame with wood look



Metal tilt mechanism



Crank

### Canopy:

100 % polyester,  
ca. 180 g/m<sup>2</sup>, rot-proof,  
water-repellent impregnation,  
without valance, with air vent,  
removable for washing by hand

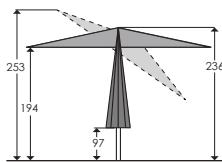
### Frame:

powder-coated  
steel frame with wood look,  
two-part pole 38 mm Ø,  
ca. 12 x 18 mm ribs,  
crank to open, metal tilt mechanism

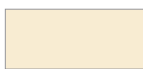
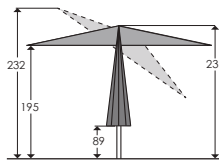
CLASSICS



Dimensions (cm)  
for size 270 cm Ø:



Dimensions (cm)  
for size 230 x 150 cm:



ecru



anthracite

ca.  
270 cm Ø



ca.  
230 x 150 cm



# Malaga

300 cm Ø

300 x 200 cm

Art. no. 614-..

Art. no. 615-..

Aluminium  
frame in  
wood look



### Canopy:

100 % polyester,  
ca. 180 g/m<sup>2</sup>, rot-proof,  
water-repellent impregnation,  
without valance, with air vent,  
removable for washing by hand

### Frame:

powder-coated  
aluminium/steel frame in wood look,  
two-part pole 48 mm Ø,  
all plastic parts in wood look,  
sturdy double cable mechanism,  
size 300 x 200 cm with tilt mechanism



Top



Ribs and pole in wood look



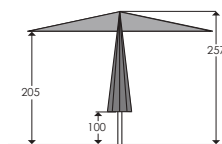
Slider in wood look



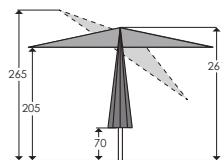
Tilt mechanism  
(only with 300 x 200 cm)



Dimensions (cm)  
for size 300 cm Ø:



Dimensions (cm)  
for size 300 x 200 cm:



ecru



anthracite



"Forest"

ca.  
300 cm Ø



614-02



614-15



614-85

ca.  
300 x 200 cm



615-02



615-15



Elegant market parasol with colour-contrasting canopy seams!

### Canopy:

100 % polyester, ca. 200 g/m<sup>2</sup>, rot-proof, water-repellent impregnation, without valance, with air vent, colour-contrasting canopy seams to match frame colour, removable for washing by hand

### Frame:

anthracite grey powder-coated aluminium/steel frame, ribs ca. 13 x 22 mm, crank, two-part pole 48 mm Ø, size 300 cm additionally with sturdy metal tilt mechanism



Air vent



Contrasting canopy seams



Metal tilt mechanism for size 300 cm Ø

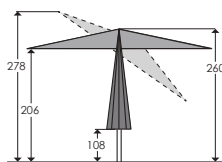


Crank

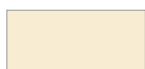
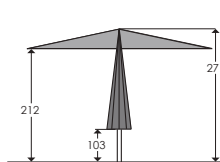
CLASSICS



Dimensions (cm) for size 300 cm Ø:



Dimensions (cm) for size 350 cm Ø:



ecru



terracotta



silver grey

ca. 300 cm Ø



ca. 350 cm Ø



# Korsika

320 cm Ø

Art. no. 711-..

 **SCHNEIDER**  
Classics



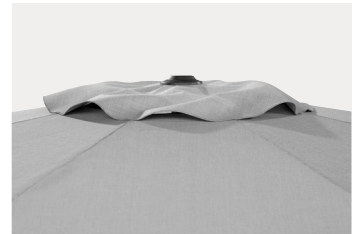
Ideal for wicker  
garden furniture

### Canopy:

100 % polyester  
in attractive web look,  
ca. 220 g/m<sup>2</sup>, rot-proof,  
water-repellent impregnation,  
without valance, with air vent,  
removable for washing by hand

### Frame:

anthracite grey powder-coated  
aluminium/steel frame,  
ribs ca. 13 x 22 mm,  
crank, two-part pole 48 mm Ø



Air vent



Frame anthracite grey  
powder-coated

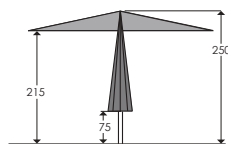


Sturdy crank



AS/NZS4399

Dimensions (cm):



ecru

711-81



ca.  
320 cm Ø



brown

711-82



silver grey

711-83



# Jumbo

300 cm Ø

400 cm Ø

Art. no. 108-..

Art. no. 110-..



Suitable for  
*restaurants*



## Canopy:

100 % high-quality brand-name polyester,  
ca. 260 g/m<sup>2</sup>,  
highly tear-resistant and rot-proof,  
highly fade-resistant acc. to  
DIN EN ISO 105-B02,  
highly water- and dust-repellent  
impregnation and acrylate coating  
up to 1,000 mm water column,  
without air vent,  
with valance, band trim,  
removable for washing by hand

## Frame:

powder-coated aluminium frame,  
anodised ribs,  
cable mechanism with automatic locking,  
two-part pole 55 mm Ø,  
ca. 20 x 30 mm ribs,  
can be replaced singly without tools  
thanks to new  
quick-change system



CLASSICS

ACCESSORIES



**Ground sleeve** for 55 mm  
tube, anodised aluminium

Art. no. 838-00



4 000570 838009

**Premium protective cover**  
of durable, waterproof and  
light-proof special polyester  
fabric, with zip and rod

Art. no. 816-41



4 000570 816410



**Concrete stand ca. 55 kg**  
for 55 mm tube, with car-  
rying handles

Art. no. 814-00



4 000570 814003



**Cross base** hot galvanised,  
extra heavy for paving slabs 50  
x 50 x 5 cm, for 55 mm Ø tube  
(slabs not included)

Art. no. 839-00



4 000570 839006



# Quadro

300 x 300 cm

Art. no. 111-..



Aluminium frame, cable mechanism, automatic locking handle



Standing seams with band trim for maximum waterproofness



Easy replacement of ribs



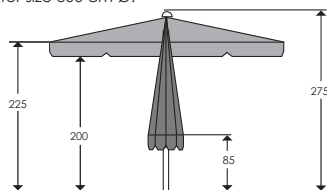
Sturdy metal joints

## COLOURS

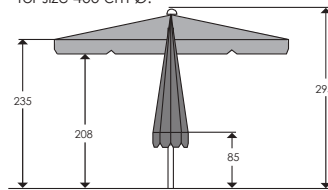
Jumbo and Quadro are available in 14 colours:

				
...-01 white	...-02 natural	...-16 sand	...-03 yellow	...-04 gold yellow
				
...-25 orange	...-06 red	...-08 bordeaux	...-79 royal blue	...-09 blue
				
...-11 green	...-64 dark green	...-15 anthracite	...-29 black	

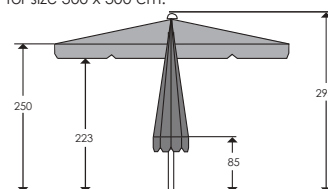
Dimensions (cm)  
for size 300 cm Ø:



Dimensions (cm)  
for size 400 cm Ø:



Dimensions (cm)  
for size 300 x 300 cm:



# Salerno

300 x 150 cm

Art. no. 746-..



Closes in tight spaces



Powder-coated steel frame



Metal tilt mechanism

Crank to open

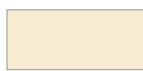
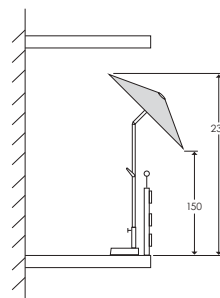
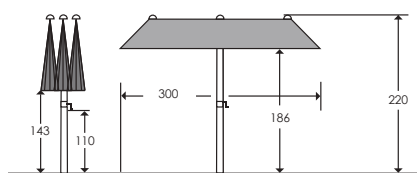
### Canopy:

100 % polyester,  
ca. 180 g/m<sup>2</sup>, rot-proof,  
water-repellent impregnation,  
without valance,  
removable for washing by hand,  
includes grey polyester protec-  
tive cover with zip  
and rod

### Frame:

anthracite grey powder-coated  
steel frame,  
ribs ca. 12 x 18 mm,  
crank to open,  
metal tilt mechanism,  
two-part pole 38 mm Ø

Dimensions (cm):



746-02



746-78



746-14



746-15



ca.  
300 x 150 cm



Opens,  
closes and tilts  
even in tight spaces,  
for example between  
a balcony rail  
and the storey  
above!



# Salerno mezza

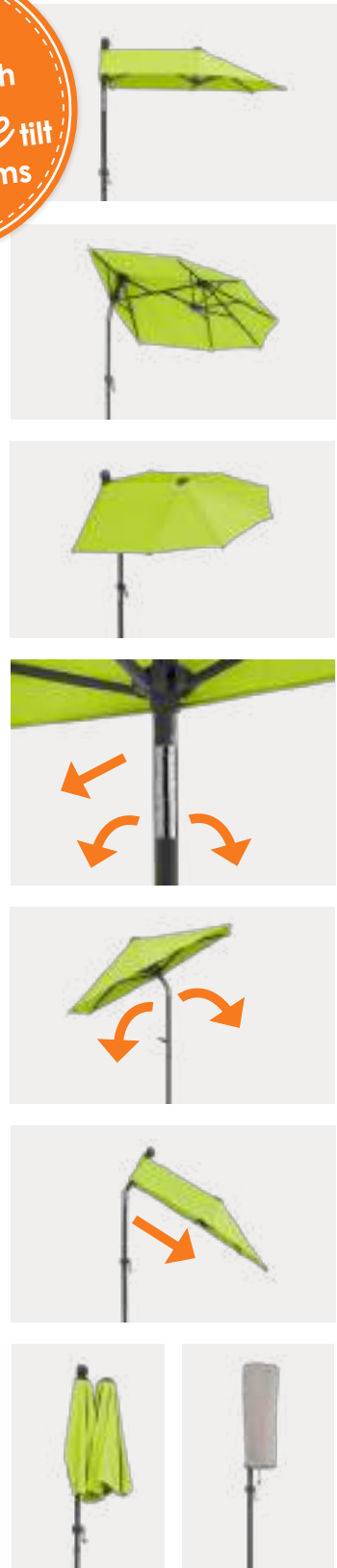
150 x 150 cm

Art. no. 747-..

**SCHNEIDER**  
Classics



Ideal balcony parasol with *double tilt mechanisms*



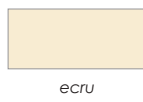
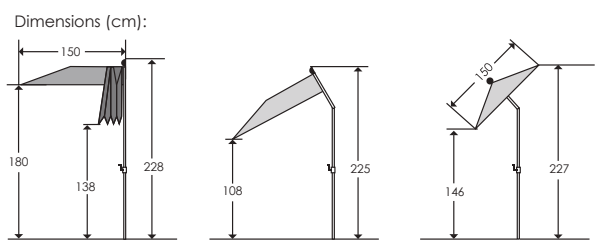
### Canopy:

100 % polyester,  
ca. 180 g/m<sup>2</sup>, rot-proof,  
water-repellent impregnation,  
without valance,  
removable for washing by hand,  
includes grey polyester protective cover with zip and rod

### Frame:

anthracite grey powder-coated steel frame,  
ca. 12 x 18 mm ribs,  
crank to open,  
double metal tilt mechanisms (tilt directions offset by 90°),  
two-part pole 38 mm Ø

CLASSICS



ca. 150 x 150 cm

# Novara

190 x 140 cm

Art. no. 758-..



**Designed for flexibility:**  
Rotates and tilts in all directions, slides to the side and is height adjustable!

**Canopy:**

100 % polyester,  
ca. 180 g/m<sup>2</sup>, rot-proof,  
water-repellent impregnation,  
without valance,  
removable for washing by hand,  
includes polyester protective cover

**Frame:**

silver grey powder-coated  
aluminium/steel frame,  
two-part pole 29/32 mm Ø,  
rotates and tilts  
in all directions,  
adjustable up to 20 cm sideways and  
69 cm in height



Slider for opening the canopy



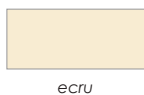
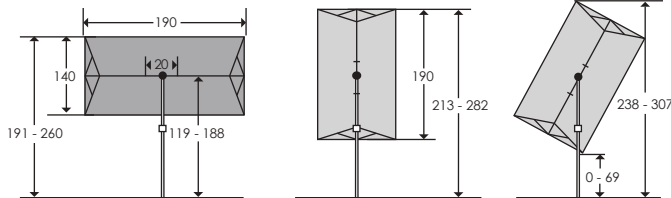
Central adjustment



Locking knob with height adjustment



Dimensions (cm):



ca.  
190 x 140 cm



# Rhodos Junior

300 cm Ø 230 x 230 cm 270 x 270 cm

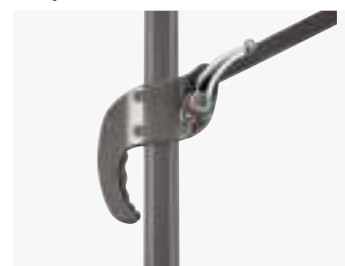
Art. no. 760-..

Art. no. 759-..

Art. no. 786-..



Rib joints



Crank mechanism integrated in handle



Solid rotary joint with foot pedal

## Canopy:

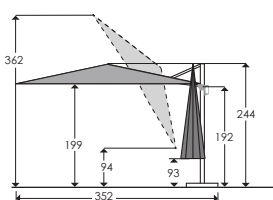
100 % polyester,  
ca. 180 g/m<sup>2</sup>, rot-proof,  
water-repellent impregnation,  
without valance, with air vent,  
removable for washing by hand,  
includes light-proof  
protective cover with zip  
and rod

## Frame:

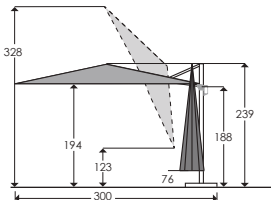
anthracite grey powder-coated  
aluminium/steel frame,  
one-part pole 40 x 55 mm,  
ribs ca. 14 x 20 mm,  
rotary plate for rotating 360°  
with foot pedal, tilting, includes cross  
base  
for paving slabs 50 x 50 x 5 cm  
(slabs not included)

**TIP:** For matching accessories, please refer to page 66 - 69

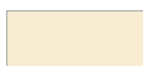
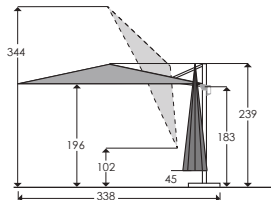
Dimensions (cm)  
for size 300 cm Ø:



Dimensions (cm)  
for size 230 x 230 cm:



Dimensions (cm)  
for size 270 x 270 cm:



ecru



red



apple green



anthracite

ca.  
300 cm Ø



ca.  
230 x 230 cm



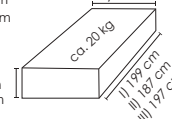
ca.  
270 x 270 cm



Packing box:  
I) 300 cm Ø  
II) 230 x 230 cm  
III) 270 x 270 cm

I) 32 cm  
II) 33 cm  
III) 33 cm

I) 14 cm  
II) 15 cm  
III) 15 cm



Application video Assembly instructions



# Rhodos

300 x 300 cm

Art. no. 782-..



**Canopy:**

100 % polyester,  
ca. 200 g/m<sup>2</sup>, rot-proof,  
water-repellent impregnation,  
with valance, with air vent,  
with band trim,  
removable for washing by hand  
incl. light-proof  
protective cover with zip  
and rod

**Frame:**

anthracite grey powder-coated  
aluminium/steel frame,  
one-part pole 53 x 77 mm,  
ribs ca. 17 x 25 mm, rotary plate  
for rotating 360° with foot pedal,  
tilting,  
very sturdy rib joints,  
includes cross base for  
50 x 50 x 5 cm paving slabs  
(slabs not included)

**TIP:** For matching accessories, please refer to page 66 - 69



Sturdy ribs



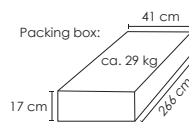
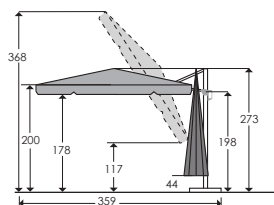
Crank mechanism integrated in handle



Solid steel rotary joint with foot pedal for locking!



Dimensions (cm)



ca.  
300 x 300 cm



Application video

Assembly instructions



# Rhodos Smart

300 x 300 cm

Art. no. 794..



Sturdy canopy suspension



Rib joints



Rotary joint

## Canopy:

100 % polyester,  
ca. 200 g/m<sup>2</sup>, rot-proof,  
water-repellent impregnation,  
without valance, with air vent,  
removable for washing by hand,  
includes light-proof  
protective cover with  
zip and rod

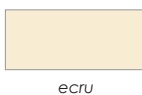
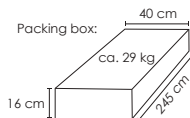
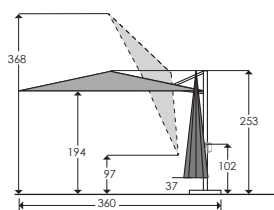
## Frame:

anthracite grey powder-coated  
aluminium frame,  
one-part pole ca. 58 x 93 mm,  
ribs ca. 17 x 25 mm,  
for rotating 360° with hand lever,  
opening and closing as well as  
continuous incline adjustment at the  
pole, effortless operation  
with crank system,  
includes cross base for paving slabs  
50 x 50 x 5 cm (slabs not included)

**TIP:** For matching accessories, please refer to page 66 - 69



Dimensions (cm):



794-02

794-14

ca.  
300 x 300 cm



Application video



Assembly instructions





Open, close  
and incline  
via crank system

Easy to  
operate with-  
out foot control  
thanks to hand lever  
and crank system  
Wheelchair friendly when used  
with a universal mount  
Page 67



Rotate by 360°  
via hand lever



# Rhodos Twist

300 x 300 cm    350 x 260 cm  
 Art. no. 730-..    Art. no. 732-..



Pivoting parasol canopy



Handle for opening, inclining, tilting



Solid rotary joint with foot pedal

## Canopy:

100 % polyester,  
 ca. 200 g/m<sup>2</sup>, rot-proof,  
 water-repellent impregnation,  
 without valance, with air vent,  
 removable for washing by hand,  
 includes light-proof  
 protective cover with zip  
 and rod

## Frame:

anthracite grey powder-coated  
 aluminium/steel frame, one-part  
 pole 53 x 80 mm, ca. 18 x 26 mm ribs,  
 rotary plate for rotating 360°  
 with foot pedal, tilting,  
 tilts sideways along the arm,  
 includes cross base for  
 50 x 50 x 5 cm paving slabs (slabs not included)

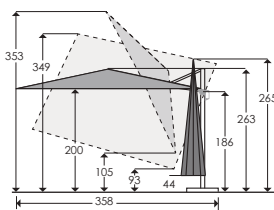
### Adjustable in 3 dimensions:

1. Rotary plate for rotating 360° with foot pedal
2. Tilts up to 50° along the pole
3. Can be tilted on both sides up to 45° along the radial arm (by handle)

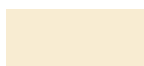
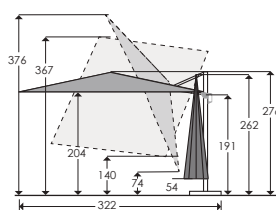
**TIP:** For matching accessories, please refer to page 66 - 69

Also available  
 with recycled  
 canopy  
 (see page 51)

Dimensions (cm)  
 for size 300 x 300 cm:



Dimensions (cm)  
 for size 350 x 260 cm:



ecu



bordeaux



silver grey



anthracite

ca.  
 300 x 300 cm



730-02



730-08



730-14

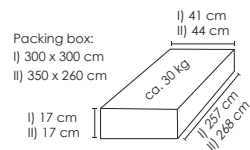


730-15

ca.  
 350 x 260 cm



732-02



Application video



Assembly instructions



# Rhodos Twist Woody

300 x 300 cm

Art. no. 729-..

**SCHNEIDER**  
Classics

Aluminium  
frame in  
wood look



### Canopy:

100 % polyester,  
ca. 200 g/m<sup>2</sup>, rot-proof,  
water-repellent impregnation,  
without valance, with air vent,  
removable for washing by hand  
includes light-proof  
protective cover with zip and  
rod

### Frame:

powder-coated  
aluminium/steel frame in wood look,  
one-part pole ca. 53 x 80 mm,  
ca. 18 x 26 mm ribs,  
rotary plate for rotating 360°  
with foot pedal, tilting,  
tilts sideways along the arm,  
includes cross base for  
50 x 50 x 5 cm paving slabs (slabs not included)

### Adjustable in 3 dimensions:

1. Rotary plate for rotating 360° with foot pedal
2. Tilts up to 50° along the pole
3. Can be tilted on both sides up to 45° along the radial arm (by handle)

**TIP:** For matching accessories, please refer to page 66 - 69

Pivoting parasol canopy



Handle for opening, inclining, tilting

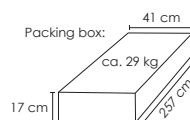
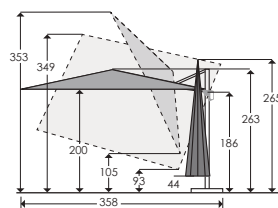


Solid rotary joint with foot pedal

CLASSICS

**50+**  
UV protection  
outstanding  
AS/NZS4399

Dimensions (cm):



ecru

729-02



ca.  
300 x 300 cm



anthracite

729-15



Application video



Assembly instructions



# Rhodos Twist Loft

300 x 300 cm

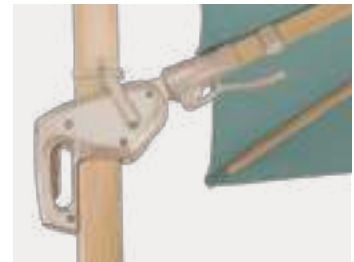
Art. no. 672-..

**SCHNEIDER**  
Classics

modern  
linen  
structure



Pivoting parasol canopy



Handle for opening, inclining, tilting



Solid rotary joint with foot pedal

## Canopy:

100 % polyester,  
ca. 200 g/m<sup>2</sup>, rot-proof,  
water-repellent impregnation,  
without valance, with air vent,  
removable for washing by hand  
incl. light-proof  
protective cover with zip and  
rod

## Frame:

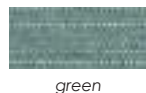
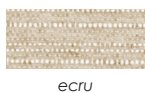
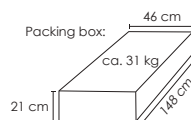
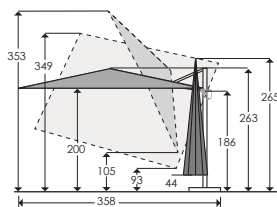
powder-coated aluminium/steel frame  
in wood look, one-part pole  
ca. 53 x 80 mm, ribs ca. 18 x 26 mm,  
rotary plate for rotating 360° with foot  
pedal, tilting, tilts sideways along  
the arm, includes cross base  
for 50 x 50 x 5 cm  
paving slabs (slabs not included)

## Adjustable in 3 dimensions:

1. Rotary plate for rotating 360° with foot pedal
2. Tilts up to 50° along the pole
3. Can be tilted on both sides up to 45° along the radial arm (by handle)

**TIP:** For matching accessories, please refer to page 66 - 69

Dimensions (cm):



672-95



ca.  
300 x 300 cm

672-96



Application video



Assembly instructions



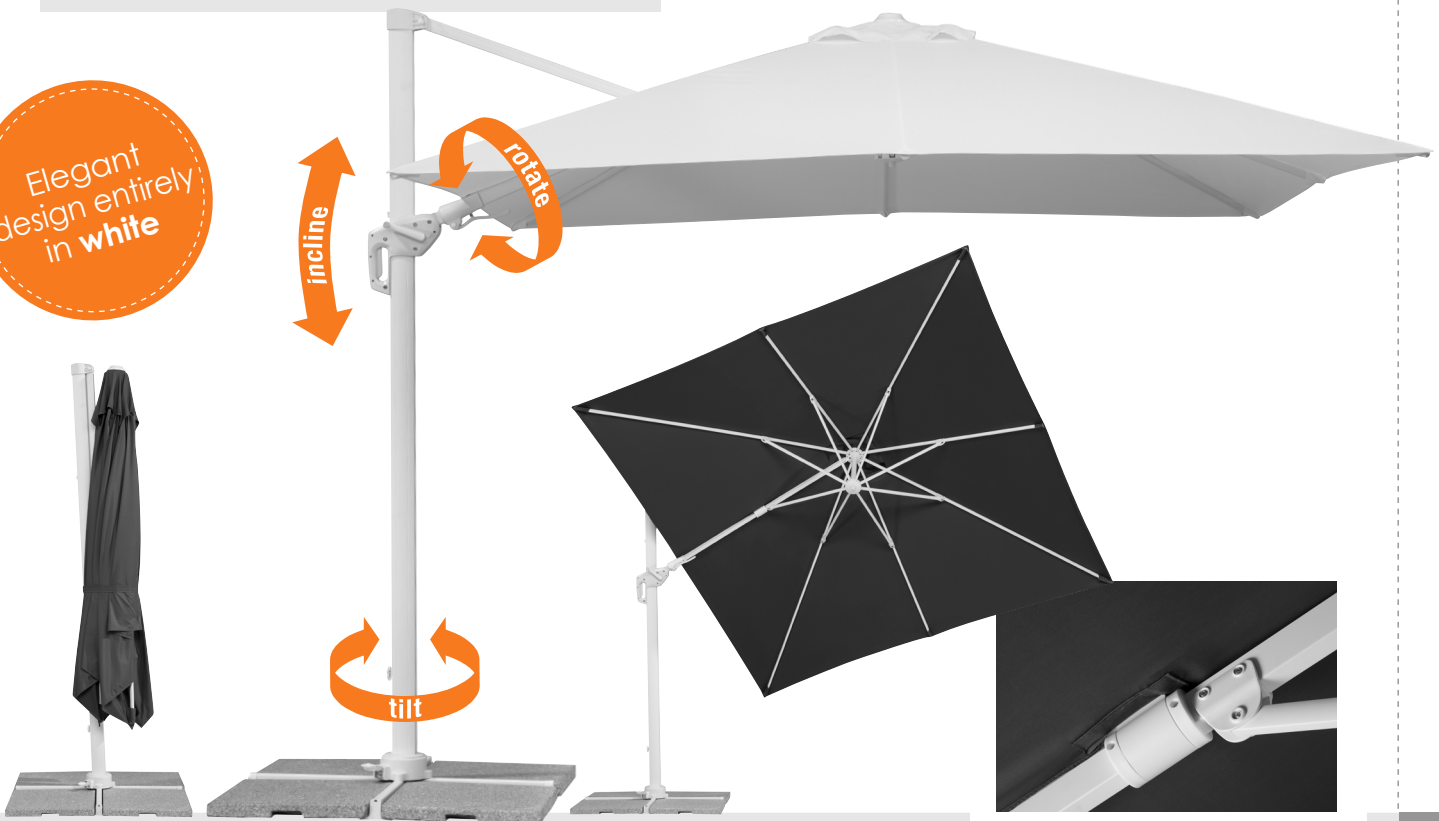
# Rhodos Twist Bianco

300 x 300 cm

Art. no. 731-..

 **SCHNEIDER**  
Classics

Elegant  
design entirely  
in **white**



### Canopy:

100 % polyester,  
ca. 200 g/m<sup>2</sup>, rot-proof,  
water-repellent impregnation,  
without valance, with air vent,  
removable for washing by hand,  
includes light-proof protective  
cover with zip and rod

### Frame:

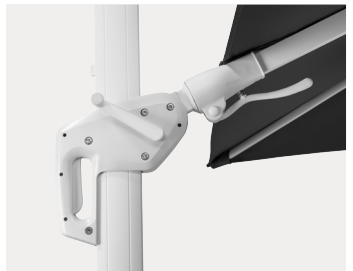
white powder-coated  
aluminium/steel frame,  
one-part pole ca. 53 x 80 mm,  
ca. 18 x 26 mm ribs,  
rotary plate for rotating 360° with foot  
pedal, tilting, tilts sideways  
along the arm, includes cross base for  
50 x 50 x 5 cm paving slabs  
(slabs not included)

### Adjustable in 3 dimensions:

1. Rotary plate for rotating 360° with foot pedal
2. Tilts up to 50° along the pole
3. Can be tilted on both sides up to 45° along the radial arm (by handle)

**TIP:** For matching accessories, please refer to page 66 - 69

Pivoting parasol canopy



Handle for opening, inclining, tilting

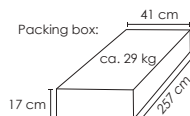
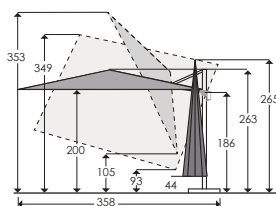


Solid rotary joint with foot pedal



AS/NZS4399

Dimensions (cm):



white

731-01



ca.  
300 x 300 cm



anthracite

731-15



Application video



Assembly instructions



# Rhodos Grande

400 x 300 cm

Art. no. 787-..



Sturdy canopy suspension



Crank mechanism integrated in handle



Solid rotary joint with foot pedal

## Canopy:

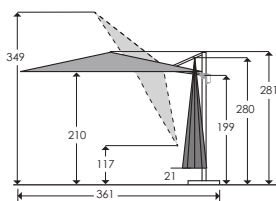
100 % polyester,  
ca. 200 g/m<sup>2</sup>, rot-proof,  
water-repellent impregnation,  
without valance, with air vent,  
removable for washing by hand  
includes light-proof protective  
cover with zip and rod

## Frame:

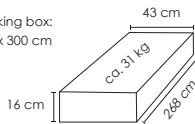
anthracite grey powder-coated  
aluminium frame,  
one-part pole 57 x 93 mm,  
ribs ca. 17 x 25 mm, rotary plate for  
rotating 360° with foot pedal, tilting,  
includes cross base for  
50 x 50 x 5 cm paving slabs  
(slabs not included)

**TIP:** For matching accessories, please refer to page 66 – 68

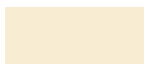
Dimensions (cm)  
for size 400 x 300 cm:



Packing box:  
400 x 300 cm



AS/NZS4399



ecu



anthracite

787-02



787-15



ca.  
400 x 300 cm

Application video



Assembly instructions



# Rhodos Blacklight

300 cm Ø  
Art. no. 793-15

**SCHNEIDER**  
Classics



LED light strips in the ribs

## Canopy:

100 % polyester,  
ca. 180 g/m<sup>2</sup>, rot-proof,  
water-repellent impregnation,  
without valance, with air vent,  
removable for washing by hand,  
includes light-proof protective  
cover with zip and rod

## Frame:

anthracite grey powder-coated  
aluminium frame, one-part pole  
67 x 50 mm, ribs 13 x 19 mm, LED light  
strips in the ribs  
(the included batteries are charged  
by a solar module on the canopy or  
with the included USB cable, battery  
charge lasts ca. 6 hours),  
rotary plate for rotating 360°  
with foot pedal, tilting,  
includes cross base for  
50 x 50 x 5 cm paving slabs  
(slabs not included)

**TIP:** For matching accessories, please refer to page 66 - 69



Solar top



Ribs with LED light strips

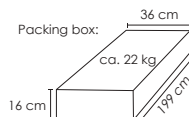
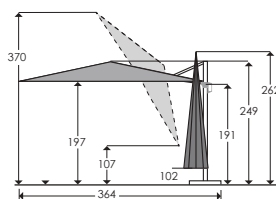


Crank mechanism integrated in handle

Solid rotary joint with foot pedal



Dimensions (cm):



793-15

ca.  
300 cm Ø



Application video



Assembly instructions



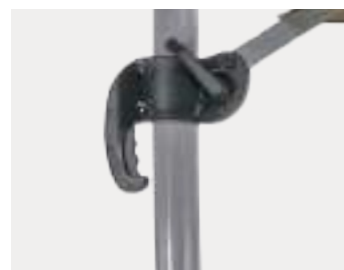
# Rhodos Rondo

350 cm Ø

Art. no. 792-..



Ribs and pole curved



Adjustable inclination



Solid rotary joint with foot pedal

## Canopy:

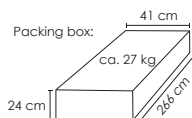
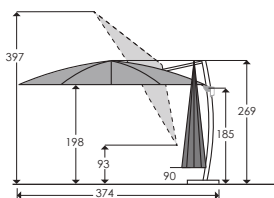
100 % polyester, ca. 200 g/m<sup>2</sup>, rot-proof, water-repellent impregnation, without valance, with air vent, removable for washing by hand, with band trim, incl. light-proof protective cover with zip and rod

## Frame:

silver grey powder-coated aluminium frame, one-part pole 53 x 77 mm, rotates 360°, tilting, ca. 14 x 24 mm ribs, very sturdy rib joints, includes cross base for 50 x 50 x 5 cm paving slabs (slabs not included)

**TIP:** For matching accessories, please refer to page 66 - 69

Dimensions (cm):



AS/NZS4399



sand



anthracite

792-16

ca. 350 cm Ø



792-15



Application video



Assembly instructions



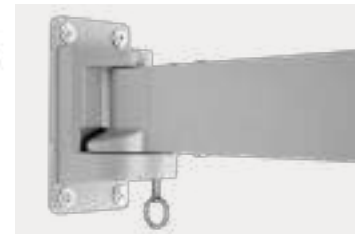


# Muro

250 cm Ø

Art. no. 617-..

For  
installation  
on the wall



Sturdy mounting plate



Closes in tight spaces



Slider with button

### Canopy:

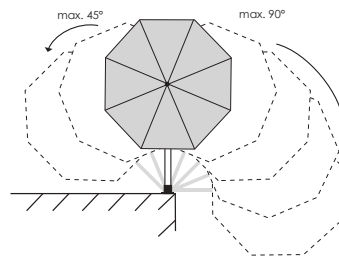
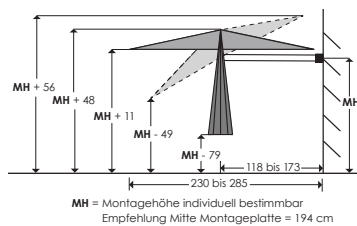
100 % polyester,  
ca. 180 g/m<sup>2</sup>, rot-proof,  
water-repellent impregnation,  
with air vent,  
removable for washing by hand  
incl. light-proof protective  
cover with hook and loop fas-  
tener and rod

### Frame:

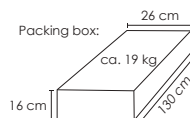
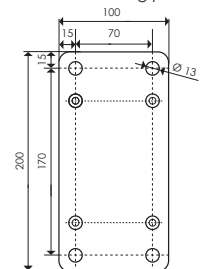
silver grey powder-coated  
aluminium frame,  
extension arm ca. 40 x 80 mm,  
55 cm extendable,  
easy-to-operate slider with button,  
tilt mechanism with button,  
ribs ca. 12 x 18 mm,  
180° swivelling,  
lockable in 9 positions,  
parasol detachable from the boom



Dimensions (cm):



Hole pattern for mounting plate (mm):



Application video



Assembly instructions



ca.  
250 cm Ø





**REUSE**

Canopy made of recycled PET



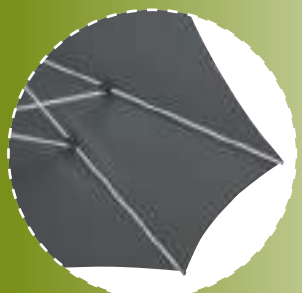
PET BOTTLES ARE COLLECTED, CLEANED, ...

... AND PROCESSED INTO GRANULES.



THE GRANULATE IS HEATED AND MELTED. FROM THIS, THE POLYESTER FIBERS ARE FORMED...

...FROM WHICH WE MAKE THE COVERING FOR OUR GREEN STYLE PARASOLS.



# Rhodos Twist

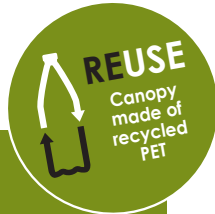
## GREEN STYLE

300 x 300 cm  
Art. no. 727-15

# Venedig

## GREEN STYLE

270 cm Ø  
Art. no. 726-15



### Canopy:

100 % recycled PET,  
ca. 200 g/m<sup>2</sup>, rot-proof,  
water-repellent impregnation,  
without valance, with air vent,  
removable for washing by hand,  
incl. light-proof protective cover  
made of 100% recycled PET  
with zip and rod

### Frame:

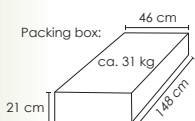
anthracite grey powder-coated  
aluminium/steel frame,  
one-part pole 53 x 80 mm,  
ca. 18 x 26 mm ribs,  
rotary plate for rotating 360°  
with foot pedal, tilting,  
tilts sideways along the arm,  
includes cross base for 50 x 50 x 5  
cm paving slabs (slabs not included)

### Canopy:

100 % recycled PET,  
ca. 180 g/m<sup>2</sup>, rot-proof,  
water-repellent impregnation, with-  
out valance, with air vent,  
removable for washing by hand

### Frame:

silver grey powder-coated  
aluminium frame,  
round ribs with 16 mm Ø,  
crank, metal tilt mechanism,  
two-part pole 38 mm Ø



Application video



Assembly instructions



anthracite

726-15



Details about UV protection, dimensions etc.  
analogous to the Rhodos Twist parasol on page 42.

Details about UV protection, dimensions etc. analogous  
to the Venedig parasol on page 22.



SUNNY



**SCHNEIDER**  
**SUNNY**

The sunny line of parasols is ideal for advertising campaigns, supplements or secondary placement. EU and Asian imports, stringently tested in accordance with Schneider quality standards, guarantee functional and durable parasols.

***The “sunny” sales display***

allows the orderly display of the sunny products on page 54 – 56 – just where you need it: with the product assortment, as a secondary display or at the point of sale.

The display is delivered empty and must be assembled!

Art. no. 934-00



# Shorty

180 cm Ø

Art. no. 616-00



## Canopy:

100 % polyester, ca. 140 g/m<sup>2</sup>, rot-proof, water-repellent impregnation, with valance, 3 different stripe designs

## Frame:

white powder-coated steel frame, three-part pole part 19/22 mm Ø, folding mechanism for compact transport size (ca. 65 cm), includes carrying bag of the same fabric, with strap

Packaging unit: 12 items

(The "sunny" sales display on page 53 is designed for 2 packaging units = 24 items)



The ideal  
*travel*  
parasol



AS/NZS4399



All single parts can be stowed in practical carrying bag.

Small size  
ca. 65 cm



616-00



# Easy

180 cm Ø

Art. no. 767-00

## Canopy:

nylon, in practical carrying bag with carrying strap, assorted colours: berry, mandarin, apple green, blue

## Frame:

silver grey powder-coated steel frame, two-part pole 19/22 mm Ø, with removable ground spike and base plate

Packaging unit: 12 items

(The "sunny" sales display on page 53 is designed for 2 packaging units = 24 items)



Ground spike and base plate for easy insertion and secure holding

The ideal  
*beach*  
parasol



AS/NZS4399



All single parts can be stowed in practical carrying bag.

767-00



# Isar

180 cm Ø

Art. no. 762-00



**Canopy:** nylon with valance  
Assorted colours: mandarin, aqua, green

**Frame:** white powder-coated steel frame,  
two-part pole 19/22 mm Ø, metal tilt mechanism

Packaging unit: 12 items  
(The "sunny" sales display on page 53 is designed for 3 packaging units = 36 items)



762-00



# Merkur

200 cm Ø

Art. no. 740-00

**Canopy:** 100 % polyester, ca. 160 g/m<sup>2</sup>,  
rot-proof, with valance,  
in assorted colours: ecru, red, apple green, blue

**Frame:** white powder-coated steel frame,  
two-part pole 22/25 mm Ø, metal tilt mechanism

Packaging unit: 12 items  
(The "sunny" sales display on page 53 is designed for 2 packaging units = 24 items)



740-00



# Avellino

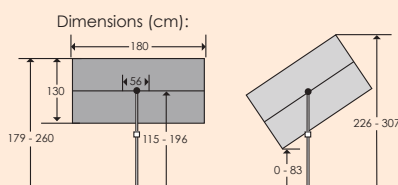
180 x 130 cm

Art. no. 611-..

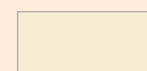
**Canopy:** 100 % polyester, ca. 160 g/m<sup>2</sup>, rot-proof,  
water-repellent impregnation, removable for washing by hand,  
includes polyester bag

**Frame:** anthracite grey powder-coated steel frame,  
two-part pole 22/25 mm Ø, rotates and tilts in all directions,  
adjustable up to 56 cm sideways and 81 cm in height

Packaging unit: 6 items  
(The "sunny" sales display on page 53 is designed for 2 packaging units = 12 items)



All single parts can be  
stowed in practical  
bag.



ecru

611-02



anthracite

611-15



# Napoli

270 cm Ø

Art. no. 707-..



### Canopy:

100 % polyester, ca. 160 g/m<sup>2</sup>, rot-proof, water-repellent impregnation, without valance, with air vent, removable for washing by hand

### Frame:

anthracite grey powder-coated steel frame, two-part pole 38 mm Ø, 12 x 18 mm ribs, crank, metal tilt mechanism

Packaging unit: 4 items

(The "sunny" sales display on page 53 is designed for 2 packaging units = 8 items)



Metal tilt mechanism

Crank



AS/NZS4399



ecru

707-02

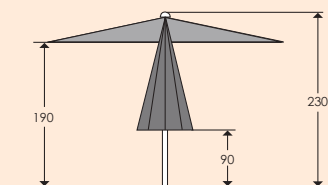


anthracite

707-15



Dimensions (cm):



# Bergamo

300 cm Ø

Art. no. 625-..



### Canopy:

100 % polyester, ca. 160 g/m<sup>2</sup>, rot-proof, water-repellent impregnation, without valance, with air vent, removable for washing by hand

### Frame:

anthracite grey powder-coated steel frame, two-part pole 38 mm Ø, 12 x 18 mm ribs, crank

Packaging unit: 10 items in single box

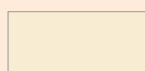


Powder-coated steel frame

Crank



AS/NZS4399



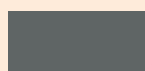
ecru

625-02



terracotta

625-05

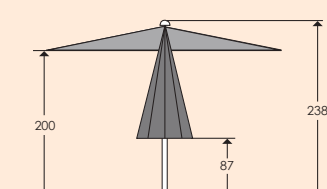


anthracite

625-15



Dimensions (cm):





# Venus

300 cm Ø

Art. no. 772-..



**Canopy:**

100 % polyester, ca. 160 g/m<sup>2</sup>, rot-proof, water-repellent impregnation, without valance, with air vent

**Frame:**

anthracite grey powder-coated steel frame, two-part pole 48 mm Ø, ribs ca. 12 x 18 mm, includes cross base for paving slabs 40 x 40 x 5 cm (slabs not included)

Packaging unit: 18 items in single box

**Matching protective cover:** 813-00 (page 77)



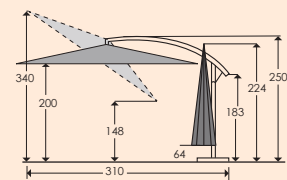
Powder-coated steel frame



Crank



Dimensions (cm):



ecru

772-02



anthracite

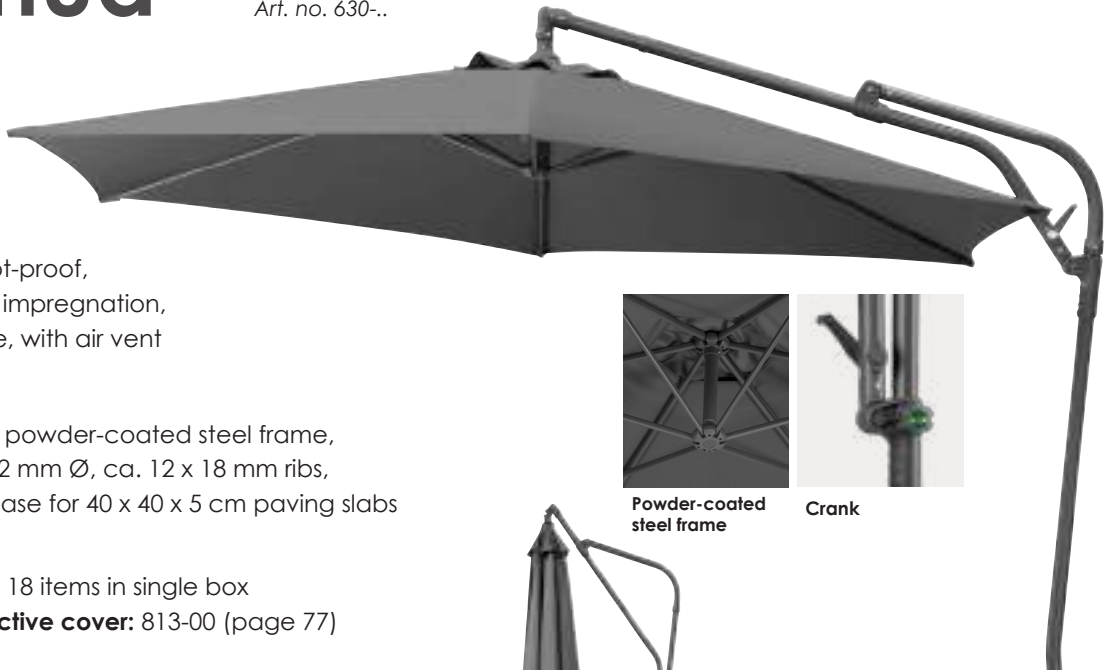
772-15



# Genua

300 cm Ø

Art. no. 630-..



**Canopy:**

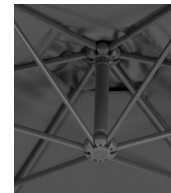
100 % polyester, ca. 160 g/m<sup>2</sup>, rot-proof, water-repellent impregnation, without valance, with air vent

**Frame:**

anthracite grey powder-coated steel frame, two-part pole 42 mm Ø, ca. 12 x 18 mm ribs, includes cross base for 40 x 40 x 5 cm paving slabs (slabs not included)

Packaging unit: 18 items in single box

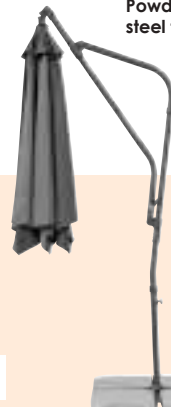
**Matching protective cover:** 813-00 (page 77)



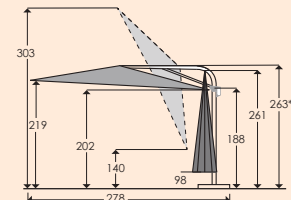
Powder-coated steel frame



Crank



Dimensions (cm):



\* At least 275 cm necessary for opening the parasol



ecru

630-02



terracotta

630-05



anthracite

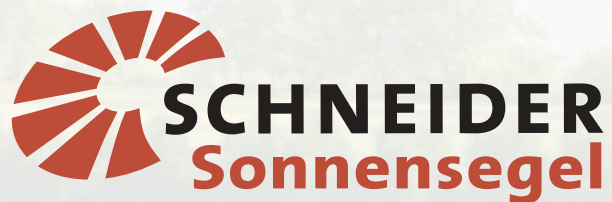
630-15





Wide variety  
of combination  
options





# Shade sails

Schneider shade sails of tear-resistant HDPE fabric or 100 % polyester feature impressive quality and versatility!



**Teneriffa** – HDPE fabric, various shapes and sizes (page 60)



**Lanzarote** – 100 % polyester, various shapes and sizes (page 61)



# Teneriffa



ca. 360 x 360 x 360 cm

Art. no. 230-..

ca. 360 x 360 cm

Art. no. 232-..

ca. 500 x 500 x 500 cm

Art. no. 231-..

ca. 500 x 500 cm

Art. no. 233-..

ca. 360 x 250 cm

Art. no. 234-..

ca. 500 x 360 cm

Art. no. 235-..



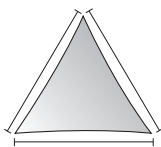
High-quality tear-resistant HDPE fabric,  
ca. 185 g/m<sup>2</sup>, rot-proof, highly fade-resistant,  
water-repellent, wind and water permeable,  
UV protection ca. 90 %,  
3 or 4 stainless steel fastening rings,  
reinforced and tear-resistant edge seam,  
convex edges for good fit,  
includes fastening rope ca. 10 m



Fastening rings of stainless steel

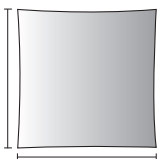
Fastening rope ca. 10 m

## Shapes, sizes and colours:



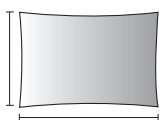
ca. 360 x 360 x 360 cm  
Packaging unit: 1 item

ca. 500 x 500 x 500 cm  
Packaging unit: 1 item



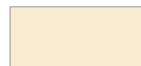
ca. 360 x 360 cm  
Packaging unit: 1 item

ca. 500 x 500 cm  
Packaging unit: 1 item



ca. 360 x 250 cm  
Packaging unit: 1 item

ca. 500 x 360 cm  
Packaging unit: 1 item



ecru



silver grey

230-02



230-14



231-02



231-14



232-02



232-14



233-02



233-14



234-02



234-14



235-02



235-14



# Lanzarote

ca. 360 x 360 x 360 cm    ca. 300 x 250 cm

Art. no. 240-..

Art. no. 242-..



ca. 400 x 400 x 300 cm

ca. 360 x 360 cm

Art. no. 241-..

Art. no. 244-..

Polyester



100 % polyester,  
rot-proof, water-repellent impregnation,  
UV protection ca. 50 %,  
3 or 4 stainless steel eyelets,  
double sewn edge seam,  
includes fastening rope ca. 10 m

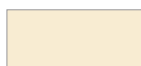


Stainless steel eyelets



Fastening rope ca. 10 m

## Shapes, sizes and colours:



ecru



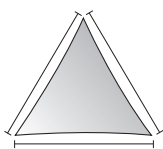
red



apple green



silver grey



ca. 360 x 360 x 360 cm  
Packaging unit: 4 items

240-02



240-77



240-14



ca. 400 x 400 x 300 cm  
Packaging unit: 4 items

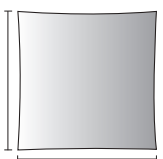
241-02



241-78



241-14



ca. 360 x 360 cm  
Packaging unit: 2 items

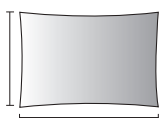
244-02



244-78



244-14



ca. 300 x 250 cm  
Packaging unit: 4 items

242-02



242-77



242-14



# Clamping anchor

for guying shade sails,  
made of stainless steel hooks on both sides  
length 150 – 218 mm



Art. no. 250-10



Packaging unit: 5 items

# D-shackle

for fastening shade sails,  
made of stainless steel  
6 mm Ø, inner width 12 mm



Art. no. 250-20



Packaging unit: 5 items

# Holding eyelet

for fastening shade sails,  
made of stainless steel  
Slab: 65 x 40 mm, hole Ø 5 mm  
Eyelet: 28 mm high, 6 mm Ø



Art. no. 250-30



Packaging unit: 5 items

# Eyelet bolt

for fastening shade sails, made of stainless steel, includes 2 nuts and 2 flat washers  
Total length: 140 mm  
Thread: M6 x 100 mm  
Eyelet: 30 mm outer Ø



Art. no. 250-40



Packaging unit: 5 items

# Snap connector

for fastening shade sails,  
made of stainless steel  
6 x 60 mm



Art. no. 250-50



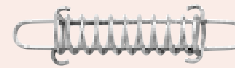
Packaging unit: 5 items

# Tension spring

for guying shade sails,  
made of stainless steel  
great stability, tensile force: 300 N  
Length ca. 145 mm



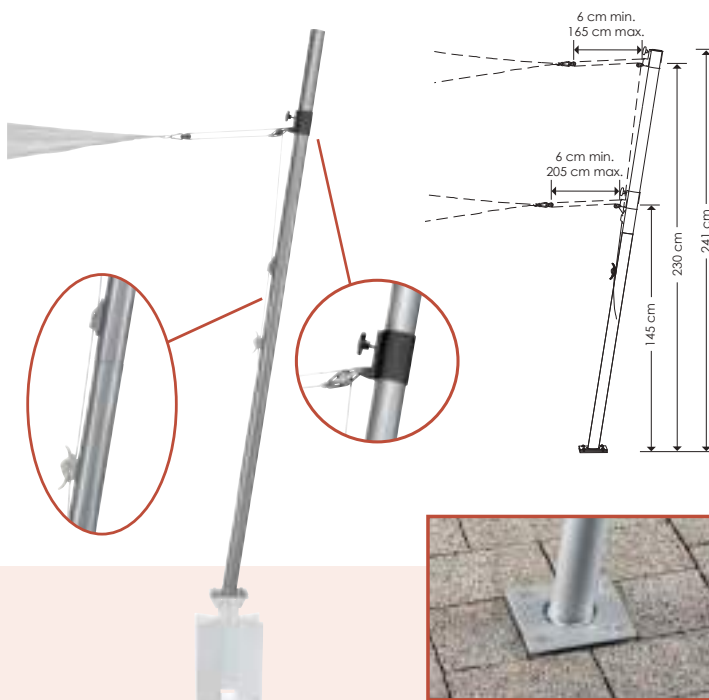
Art. no. 250-60



Packaging unit: 5 items

# Pole

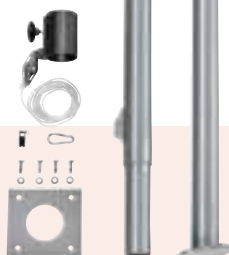
for fastening shade sails,  
made of steel, hot galvanised, great stability,  
ca. 60 mm Ø, height ca. 241 cm, rotates 360°  
for ideal alignment in the ground plate,  
fastening point continuously height  
adjustable from 145 cm to 230 cm,  
includes cable hoist with 5 m fastening  
rope and snap connector,  
including rope clip and cleat,  
matching our  
universal ground plate  
(Art. no. 897-00)  
matching our  
universal ground anchor  
(Art. no. 897-50)



Art. no. 251-00



Packaging unit: 1 item



# Sales display

## for shade sails and accessories

Free-standing metal display on a EURO pallet  
with informative sign on top and room for scanner labels.  
Delivered assembled and fully equipped. Art. no.: 937-00

Front



Rear

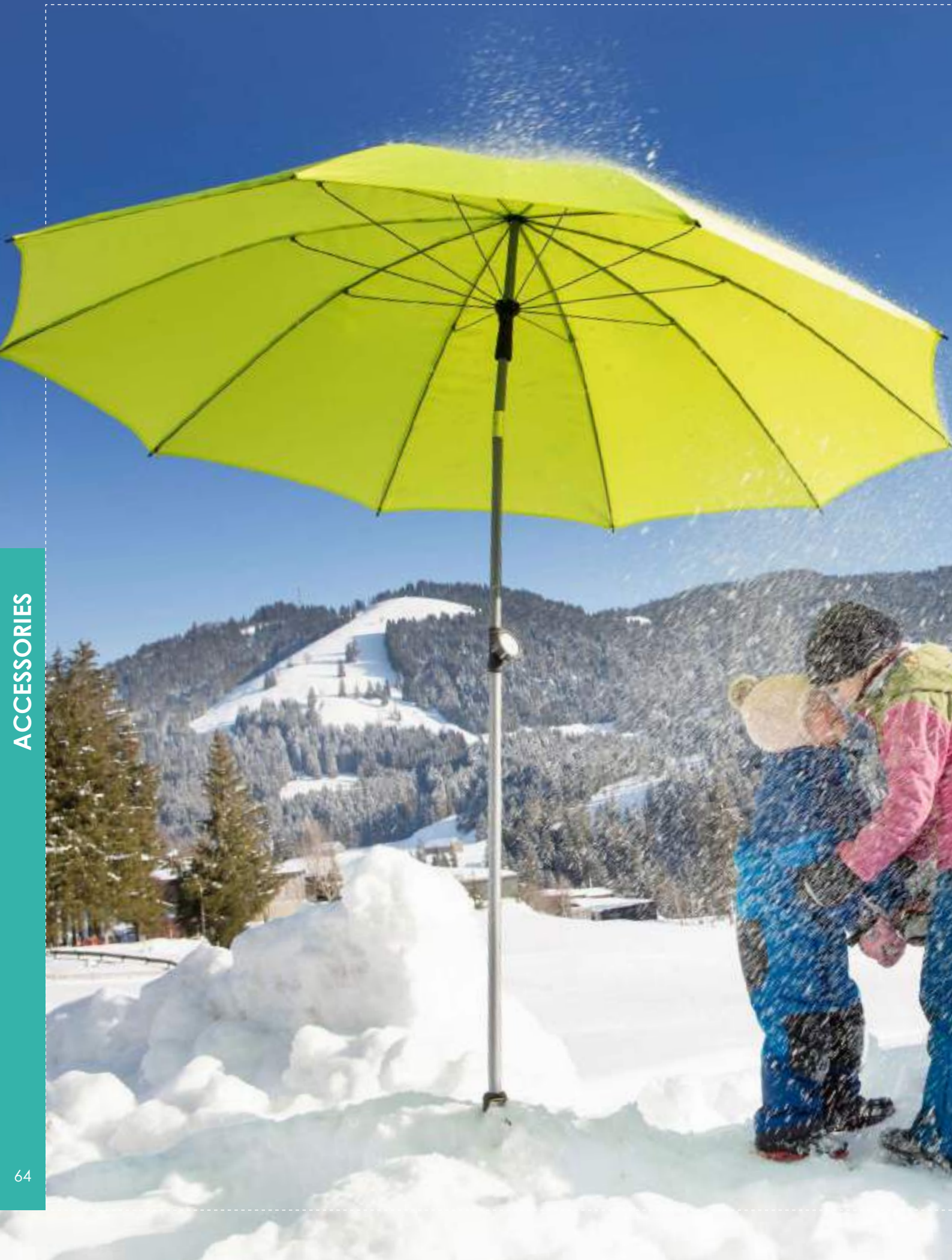


### Standard layout front Teneriffa shade sail

Quantity	Article number	Designation and size	Colour
2 items	230-02	Teneriffa shade sail 360x360x360 cm	ecru
2 items	230-14		silver grey
2 items	231-02	500x500x500 cm	ecru
2 items	231-14		silver grey
2 items	232-02	360x360 cm	ecru
2 items	232-14		silver grey
2 items	233-02	500x500 cm	ecru
2 items	233-14		silver grey
2 items	234-02	360x250 cm	ecru
2 items	234-14		silver grey
2 items	235-02	500x360 cm	ecru
2 items	235-14		silver grey

### Standard layout rear Lanzarote shade sail & accessories

Quantity	Article number	Designation and size	Colour
4 items	240-02	Lanzarote 360x360x360 cm	ecru
4 items	240-14		silver grey
4 items	240-77		red
4 items	241-02	400x400x300 cm	ecru
4 items	241-14		silver grey
4 items	241-78		apple green
4 items	242-02	300x250 cm	ecru
4 items	242-14		silver grey
4 items	242-77		red
4 items	244-02	360x360 cm	ecru
4 items	244-14		silver grey
4 items	244-78		apple green
5 items	250-10	Clamping anchor	
5 items	250-20	D-shackle	
5 items	250-30	Holding eyelet	
5 items	250-40	Eyelet bolt	
5 items	250-50	Snap connector	
5 items	250-60	Tension spring	
2 items	251-00	Pole	
2 items	897-00	Universal ground plate	



ACCESSORIES



The practical accessories ensure secure support of your Schneider parasols wherever they are used. Schneider parasol accessories, like all other Schneider products, are carefully inspected for quality and workmanship.

The new standardised packaging enhances the appearance to boost sales at the point of sale.

## NEW in Accessories:

Parasol  
caddy  
(page 71)



Steel  
balcony  
parasol  
stand  
(page 73)

Natural  
concrete  
stand  
(page 75)



# Universal mounts

Installation on one of the mounts requires that the rotary plate (see detail images) be directly screwed onto the selected mount using the screws (M8x20) that have been included with the parasol. There is therefore no need for the cross base. You can store the base and use it as needed if you change locations temporarily.

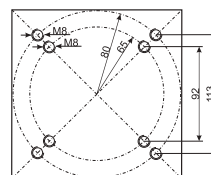
The elimination of the cross base reduces the overall height of the parasol by about 5 cm.

**Our tip:** Before you use one of the mounts listed, we recommend that you first use the parasol with the included cross base for a few weeks in order to determine the ideal location for your parasol.

## Suitable for

- Monaco 3 x 3 m
- Bermuda
- Rhodos Junior series
- Rhodos Grande  
*(universal ground plate + universal wall console only)*
- Rhodos Twist series
- Rhodos
- Rhodos Blacklight
- Rhodos Rondo
- Rhodos Smart  
*(except universal wall console)*
- Genua
- Pole for shade sail  
*(except universal ground stake)*

Hole pattern:  
Dimensions in mm



## Universal wall console

For installation on walls, hot galvanised, mounting plate ca. 20 x 16 cm, great stability, space-saving installation option, size: 21 x 16 x 16 cm

Suitable for the parasols listed above, depending on the height of the wall and the fastening point of the universal wall console.



Art. no. 897-60

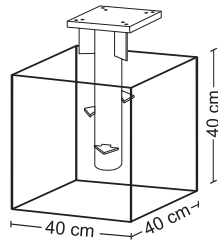


# Universal ground plate

To be set in concrete

To be set in concrete, hot galvanised, mounting plate ca. 16 x 16 cm, total height ca. 40 cm

Minimum dimensions for the concrete foundation:



Art. no. 897-00



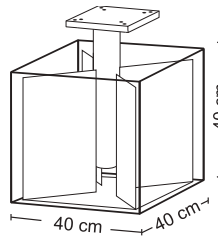
4 000570 897006

# Universal ground anchor

For anchoring in the ground

For anchoring in the ground\* or setting in concrete, hot galvanised, mounting plate ca. 16 x 16 cm, total height ca. 45 cm

Minimum dimensions for the concrete foundation:



\* Only in undisturbed topsoil!  
Not suitable for sandy or stony soils!

Art. no. 897-50



4 000570 897501

# Universal ground stake

For anchoring

For anchoring, hot galvanised, mounting plate ca. 16 x 16 cm, total height ca. 55 cm, anchoring tool included



Art. no. 897-55



4 000570 897556



# Hanging parasol wind stabiliser

This wind stabiliser made of robust, black polyester straps reduces unsteadiness of the parasol caused by wind and therefore also the strain on the parasol frame. It can be mounted on all hanging parasols with a locking screw on the lower part of the pole and a maximum pole circumference of 260 mm, without the use of tools.

## IMPORTANT:

The hanging parasol wind stabiliser does **not** increase the stability of the hanging parasol. The stability depends primarily on the weight and the size of the parasol stand that is used! The wind stabiliser only reduces the movement of the canopy and the strain on the parasol frame. The hanging parasol should always be closed in windy conditions.

## Suitable for the following hanging parasols:

- Monaco 3 x 3 m • Bermuda
- Rhodos Grande • Rhodos Twist series
- Rhodos • Rhodos Blacklight • Rhodos Rondo
- Rhodos Smart

## Scope of delivery:

- 1x pole fastener
- 2x rib fasteners
- 2x tie-down straps

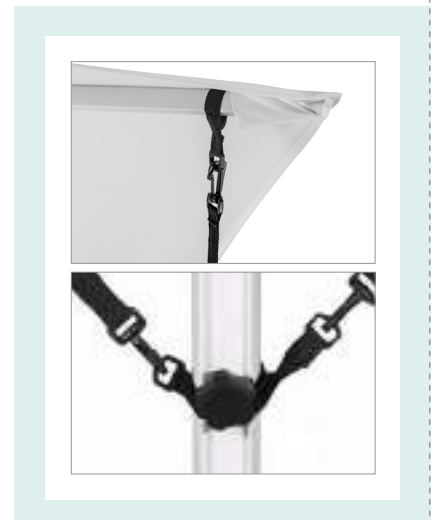
Art. no. 313-00



4 000570 313001



Packaging unit: 6 items



# Slabs for hanging parasols

Slabs suitable for cross bases of hanging parasols. For filling with water from the side. Filled 100 kg and therefore suitable for hanging parasols. Walkable! The interlocking design creates a continuously connected unit. Overall height of the parasol is about 5cm higher.

## Suitable for our parasols:

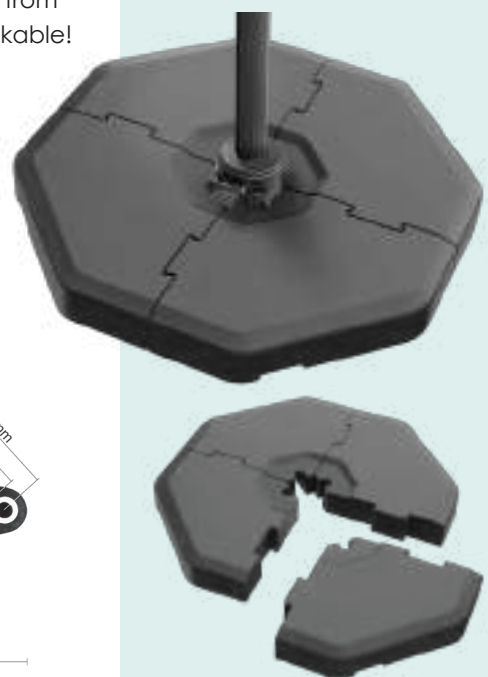
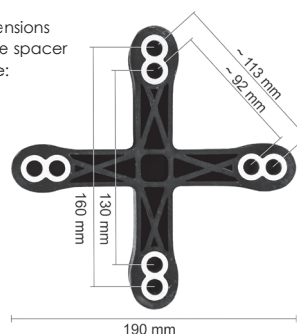
- Monaco 3 x 3 m • Bermuda • Rhodos Junior series
- Rhodos Twist series • Rhodos • Rhodos Blacklight
- Rhodos Rondo • Genua

1 set consists of 4 elements.

Total size ca. 111 x 111 x 12 cm

Empty weight: ca. 12 kg/set

Dimensions  
of the spacer  
plate:



Art. no. 312-15



4 000570 312158



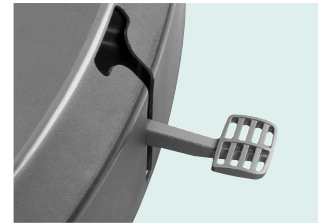
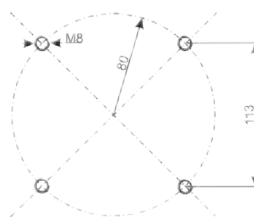
# Parasol stand for hanging parasols, mobile

Sturdy frame of powder-coated steel with foot pedal for raising, anthracite grey plastic cover colour matched to our hanging parasols, 4 PU-coated steering rollers, 5 plastic tanks for filling with sand and/or water, total weight ca. 110 kg (with sand) or ca. 90 kg (with water), overall height of parasol is about 15 cm higher.

## Suitable for our parasols:

- Monaco 3 x 3 m
- Bermuda
- Rhodos Junior series
- Rhodos
- Rhodos Twist series
- Rhodos Blacklight
- Rhodos Rondo
- Rhodos Smart

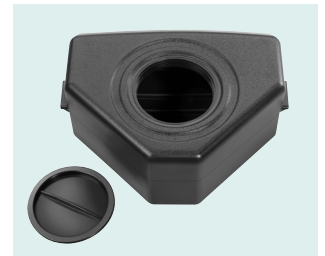
Hole pattern for mounting the parasol holder.  
Dimensions in mm:



Ready to move when foot pedal is pressed



Plastic tanks and rollers

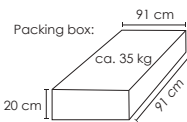


Plastic tank for filling



Parasol not included

Art. no. 319-15



# Steering bar for mobile stands for hanging parasols

Allows effortless movement of the mobile hanging parasol stand by mounting between the rotating plate of the parasol and the mounting plate of the parasol stand. Rod is collapsible.

Can also be retrofitted in existing hanging parasol stands (Art. no. 319-15).

Can also be used with other mobile parasol stands with a suitable hole pattern.

Hole pattern for mounting.

Dimensions in mm:



Art. no. 319-50



Parasol and parasol stand not included



# Table clamp

made of galvanised steel,  
for poles up to 32 mm Ø  
clamping area: round profiles: 40 mm Ø  
flat profiles: 38 mm Ø



Art. no. 801-00



Blister packaging made of recycled PET bottles.  
Packaging unit: 12 items

# Balcony clamp

made of galvanised steel,  
clamping area: 190 mm

for vertical mounting: for poles up to 25 mm Ø  
for horizontal mounting: for poles up to 32 mm Ø  
(For poles up to 38 mm Ø only approved  
for use with additional balcony stand  
or second balcony clamp.)

Art. no. 802-00



Blister packaging made of recycled PET bottles.  
Packaging unit: 6 items



# Lawn spike

made of galvanised steel,  
for poles up to 25 mm Ø

Art. no. 803-00



Blister packaging made of recycled PET bottles.  
Packaging unit: 6 items



# Lower poles



white

Art. no. 843-00

25 mm Ø  
(inside:  
23 mm Ø)



Art. no. 844-00

30 mm Ø  
(inside:  
28 mm Ø)



Packaging unit: 6 items



silver grey

Art. no. 886-14

25 mm Ø  
(inside:  
23 mm Ø)



Packaging unit: 6 items



anthracite

Art. no. 884-00

25 mm Ø  
(inside:  
23 mm Ø)



Art. no. 885-00

30 mm Ø  
(inside:  
28 mm Ø)



Packaging unit: 6 items

# Ground sleeve

of anodised aluminium,  
for poles with 38 - 50 mm Ø  
for large parasols up to 400 cm Ø

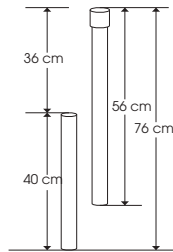


Blister packaging  
made of recycled  
PET bottles.

Art. no. 827-00



Packaging  
unit: 4 items



# Ground screw

made of galvanised steel,  
for 38 - 58 mm Ø poles,  
3 sturdy centring screws,  
Total length: 50 cm

Art. no. 888-00



Packaging  
unit: 6 items



# Four-peg lawn anchor

made of galvanised steel,  
collapsible, disassembled on delivery,  
for 25 - 38 mm Ø poles,  
for parasols up to 300 cm Ø

Art. no. 863-00



Packaging  
unit: 4 items



# Parasol caddy

Plastic basket, round approx. 30 cm Ø,  
can be mounted directly on the parasol,  
easy installation, height-adjustable,  
weatherproof, for attachment to  
parasol poles of 32, 34 and 38 mm Ø



black

Art. no. 4038-2901



# Parasol holders Foxi and Maxi



Innovative parasol mounts for stable and secure mounting of parasols on balcony rails. The two half shells of the parasol holder are each securely held by four screws, fastening the parasol pole securely to the balcony rail.

The Allen key needed for this is included.

Fibre-reinforced plastic provides maximum stability and an aesthetic design with no edges or corners.

Blister packaging made of recycled PET bottles.



## Foxi parasol holder



### Combinations:

Parasol poles with...	25 mm Ø	30 mm Ø	32 mm Ø	38 mm Ø
Round tube 5/4" (42.4 mm Ø)	yes	yes	yes	no

Art. no. 804-00



4 000570 804004

## Maxi parasol holder



### Combinations:

Parasol poles with...	25 mm Ø	30 mm Ø	32 mm Ø	38 mm Ø
Round tube 1" (33.7 mm Ø)	yes <sup>1)</sup>	yes <sup>1)</sup>	yes <sup>1)</sup>	yes
Round tube 5/4" (42.4 mm Ø)	yes <sup>1)</sup>	yes	yes	yes
Square tube 35 x 35 mm	yes	yes	yes	yes
Rectangular tube 50 x 30 mm	yes	yes	yes	yes <sup>2)</sup>
Flat steel 40 x 6 mm	yes <sup>1)</sup>	yes <sup>1)</sup>	yes <sup>1)</sup>	yes
Flat steel 50 x 6 mm	yes	yes	yes	yes
T-profile 40 x 40 x 6 mm	yes	yes	yes	yes

<sup>1)</sup> Only with M8x70 screws (M8x90 screws are included)

<sup>2)</sup> Only with M8x100 screws (M8x90 screws are included)

Art. no. 807-00



4 000570 807005



# Granite balcony parasol stand

**ca. 25 kg granite**

polished granite surface, stainless steel tube with press-in tab,  
for 25 - 40 mm Ø poles  
for centre-pole parasols up to 200 cm Ø and small rectangular parasols

granite

Art. no. 865-00



Packaging unit: 10 items



# Concrete balcony parasol stand

plastic casing filled with concrete,  
for poles with 25 - 32 mm Ø, for centre-pole parasols  
up to 200 cm Ø  
and small rectangular parasols

silver grey

Art. no. 889-14



Packaging unit: 10 items

Secure  
mounting  
with  
**Supergrip**



# PE balcony stand

**ca. 25 ltr., for filling with water**

for 25 - 32 mm Ø poles,  
for centre-pole parasols up to 200 cm Ø and small rectangular parasols,  
to be filled with sand or water

anthracite

Art. no. 862-15



Packaging unit: 5 items



# Balcony cross base

for poles with 30 - 40 mm Ø,  
for 40 x 40 cm or 50 x 50 cm paving slabs,  
for centre-pole parasols up to 250 cm Ø and small rectangular parasols,  
(slabs not included)

Art. no. 864-00



Packaging unit: 4 items



# Steel balcony parasol stand

**ca. 23 kg steel**

silver grey powder-coated flat steel plate with a thickness  
of 15 mm, stainless steel tube with press-in tab, rubber feet  
to protect the ground, for 25 - 40 mm Ø poles, for centre-pole  
parasol up to 200 cm Ø and small rectangular parasols

silver grey

Art. no. 332-14



Packaging unit: 10 items

**New**



## PE stands for water

**ca. 20 litres** for poles from 25 - 32 mm Ø,  
to be filled with sand or water

Packaging unit: 5 items, minimum order quantity: 60 items



white

Art. no. 855-01



8 003059 122008



anthracite

Art. no. 855-15



8 003059 117103

**ca. 45 litres** for poles from 38 - 50 mm Ø,  
to be filled with sand or water, with roller

Packaging unit: 3 items, minimum order quantity: 36 items



white

Art. no. 856-01



8 003059 012002



anthracite

Art. no. 856-15



8 003059 012507



## PE stands for sand

**ca. 45 kg**

with rollers and recessed handle,  
for 30 - 50 mm Ø poles,  
for centre-pole parasols up to 300 cm Ø

Art. no. 857-15



4 000570 857154

Packaging unit: 4 items



Secure  
mounting  
with  
Supergrip



## Cross stand Standard

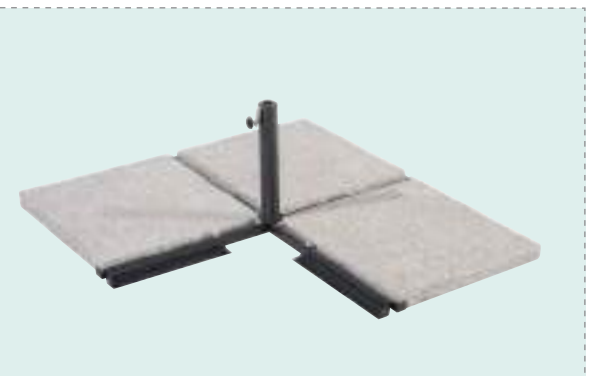
for poles with 25 - 50 mm Ø,  
for 40 x 40 or 50 x 50 cm paving slabs,  
for large parasols up to 400 cm Ø  
(slabs not included)

Art. no. 837-15



4 000570 837156

Packaging unit: 4 items



## Cross base Plus

for 38 - 50 mm Ø poles  
for 40 x 40 cm paving slabs  
for large parasols with a diameter of up  
to 400 cm or large rectangular parasols  
Tube with 2 screws and press-in tab  
(slabs not included)

Art. no. 822-15



4 000570 822152

Packaging unit: 4 items



Great  
stability  
& easy  
installation



# Concrete stand

**ca. 20 kg**, for poles with 25 - 32 mm Ø,  
for centre-pole parasols up to 200 cm Ø and  
small rectangular parasols, plastic sleeve,  
with recessed handles

Packaging unit: 10 items



silver grey

Art. no. 877-14



4 000570 877145



anthracite

Art. no. 877-15



4 000570 877152



Secure  
mounting  
with  
Supergrip



ca. 20 kg



# Concrete stand

**ca. 30 kg** for poles from 30 - 40 mm Ø,  
for centre-pole parasols up to 250 cm Ø  
and large rectangular parasols, plastic sleeve,  
with recessed handles



anthracite

Art. no. 878-15



4 000570 878159

Packaging unit:  
10 items



Secure  
mounting  
with  
Supergrip



ca. 30 kg



# Concrete stand

**ca. 40 kg** for poles from 30 - 50 mm Ø,  
for centre-pole parasols up to 300 cm Ø,  
plastic sleeve, roller, handle



anthracite

Art. no. 898-15



4 000570 898157

Packaging unit:  
6 items



Secure  
mounting  
with  
Supergrip



ca. 40 kg



# Natural concrete stand

with practical rope handles,  
stainless steel tube with reducing rings made of robust plastic,  
four plastic feet to protect the ground

**ca. 45 kg**, square, for poles with 25 - 48 mm Ø,  
for centre-pole parasols up to 360 cm Ø



anthracite

Art. no. 4033-1501



4 000570 080033

Packaging unit:  
10 items



ca. 45 kg

## Granite stand

polished granite surface, stainless steel tube,  
no need for plastic reduction rings,  
two recessed handles on sides

### ca. 30 kg, round

for poles with 25 - 40 mm Ø, for centre-pole parasols  
up to 250 cm Ø and small rectangular parasols

Art. no. 867-00



Packaging unit: 10 items



## Granite stand

polished granite surface, stainless steel tube,  
no need for plastic reduction rings,  
two recessed handles on sides

### ca. 42 kg, square

for poles with 38 - 50 mm Ø, for centre-pole parasols  
up to 360 cm Ø

Art. no. 869-00



Packaging unit: 10 items



## Trolley granite stand

polished granite surface,  
stainless steel tube with reducing rings made  
of robust plastic, two integrated wheels and a practical  
extendable handle allow for effortless movement,  
two recessed handles on sides,  
rubber feet to protect the ground

### ca. 45 kg, square

for 32 - 48 mm Ø poles,  
for centre-pole parasols up to 360 cm Ø

With roll  
and  
practical  
handle



Art. no. 333-00



Packaging unit: 10 items

# Protective covers

for sun & market parasols

100% polyester, light-proof for perfect protection against UV radiation and fading of the parasol, water-repellent coating, breathable

Blister packaging made of recycled PET bottles.  
Packaging unit: 6 items

135 x 20/25 cm *Art. no. 817-00* for parasols up to 200 cm Ø



183 x 25/35 cm *Art. no. 821-00* for parasols up to 300 cm Ø with zip and rod



250 x 27/44 cm *Art. no. 833-00* for parasols up to 400 cm Ø with zip and rod



for parasols up to 200 cm Ø

for parasols up to 300 cm and 400 cm Ø, with zip and rod

# Protective covers

for hanging parasols

100% polyester, light-proof for perfect protection against UV radiation and fading of the parasol, water-repellent coating, breathable

Blister packaging made of recycled PET bottles.  
Packaging unit: 6 items

206 x 35/38 cm *Art. no. 813-00* for hanging parasols up to 300 cm Ø with zip



240 x 57 cm *Art. no. 813-40* for hanging parasols up to 400 cm Ø, 300 x 300 cm and 350 x 260 cm, with zip and rod



for hanging parasols up to 300 cm Ø, with zip

for hanging parasols up to 400 cm Ø, 300 x 300 cm and 350 x 260 cm, with zip and rod

# POS displays



**Product assortment banner**  
Art. no. 896-00

## Scanner strips for

- Article label
- Price label



## Grid insert for accessories



- Ideal for small presentations
- Right next to the parasols
- No additional floor space needed

Art. no. 935-00

## Sales displays for parasols

- Provides space for:**
- Standard parasols with 25 - 32 mm tube Ø
  - Market parasols with 38 mm tube Ø
  - Large parasols with 48 mm tube Ø

- Features:**
- Surface area of half a EURO pallet
  - Can be stocked individually
  - Can be linked for uniform alignment
  - Endless combinations
  - Low removal height (28 cm)
  - Stackable
  - Washable
  - 2 scanner strips with optimal scanning position
  - No scratching of parasol poles
  - Parasols stand upright, saving space

Art. no. 930-00



The perfect parasol presentation

# SCHNEIDER Displays

NEAT AND ORDERLY!



**Display for accessories**



(includes double hooks)  
Delivered assembled and fully equipped.  
Art. no. 940-00

**Display for hanging parasols**



(includes slanted shelf)  
Delivered disassembled.  
Art. no. 941-00

**Display for parasol stands**



Provides space for ca. 2 x 10 parasol stands.  
Delivered assembled and fully equipped.  
Art. no. 890-00

**Display for parasol stands**



Provides space for 15 PE 20 ltr. stands or 9 PE 45 ltr. stands.  
Size: ca. 53 x 53 x 215 cm  
Art. no. 936-00

# Accessories at a glance

Art. no.	Model	Table clamp	Balcony clamp	Lawn spike	Four-peg lawn anchor	Parasol caddy	Ground sleeve	Ground screw	Foxi parasol holder	Maxi parasol holder	Protective cover, up to 200 cm parasol	Protective cover, up to 300 cm parasol	Protective cover, up to 400 cm parasol	Granite balcony parasol stand ca. 25 kg	Concrete balcony stand ca. 20 kg	PE balcony stand ca. 25 ltr.
																
		801-00	802-00	803-00	863-00	4038-2901	827-00	888-00	804-00	807-00	817-00 321-00	821-00 322-00	833-00 323-00	865-00	889-14	862-15
	Page	70	70	70	71	71	71	71	72	72	77	77/13	77/13	73	73	73



753-..	Aquila 200/8	7	✓	✓	✓	✓			✓	✓	✓			✓	✓	●
754-..	Aquila 250/10	7		▲		✓			▲	▲		✓		●	●	●
755-..	Aquila 225 x 120	8	✓	✓		✓			✓	✓	321-00 only	✓		✓	✓	●
756-..	Aquila 265 x 150	8		▲		✓			▲	▲		✓		●	●	●
1000-..	Santorini 325x325	11					✓	✓						✓		
644-..	Gemini 360/8	12					✓	✓						✓		



715-..	Locarno 150/8	16	✓	✓	✓	✓			✓	✓	✓			✓	✓	✓
716-..	Locarno 200/8	16	✓	✓	✓	✓			✓	✓	✓			✓	✓	●
717-..	Locarno 220/10	16		▲	✓	✓			▲	▲	✓			●	●	●
718-..	Locarno 180x120	16	✓	✓	✓	✓			✓	✓	✓			✓	✓	●
680-..	Ibiza 200/8	17	✓	✓	✓	✓			✓	✓	✓			✓	✓	●
681-..	Ibiza 240/8	17		▲		✓			▲	▲	✓			●	●	●
682-..	Ibiza 180 x 120	17	✓	✓	✓	✓			✓	✓	✓			✓	✓	●
620-..	Bilbao 220/6	18		▲		✓	✓	✓		✓		✓		✓		
621-..	Bilbao 210x130	18		▲		✓	✓	✓		✓		✓		✓		
640-..	Harlem 270/8	19		▲		✓	✓	✓		▲		✓		●		
783-..	Orlando 270/8	20		▲		✓	✓	✓		▲		✓		●		
1005-..	Tarifa 270/10	21		▲		✓	✓	✓		▲		✓		●		
683-..	Venedig 270/8	22		▲		✓	✓	✓		▲		✓		●		
664-..	Sevilla 270/6	23		▲		✓	✓	✓		▲		✓		●		
667-..	Sevilla 240 x 140	23		▲		✓	✓	✓		▲		✓		●		
742-..	Tunis 270 x 150	24		▲		✓	✓	✓		▲		✓		●		
643-..	Porto 300 x 200	25		▲		✓	✓	✓		▲			✓	●		
752-..	Oslo 300 x 200	26		▲		✓	✓	✓		▲			✓	●		
688-..	Cordoba 230x150	28		▲		✓	✓	✓		▲		✓		●		
689-..	Cordoba 270/6	28		▲		✓	✓	✓		▲		✓		●		
615-..	Malaga 300 x 200	29					✓	✓					✓			
614-..	Malaga 300/8	29					✓	✓				✓				
684-..	Adria 300/8	30					✓	✓				✓				
685-..	Adria 350/8	30					✓	✓					✓			
711-..	Korsika 320/8	31					✓	✓				✓				
746-..	Salerno 300 x 150	34/35		▲		✓	✓	✓		▲				●		
747-..	S. mezza 150x150	36														
758-..	Novara 190 x 140	37		▲		✓	✓			▲				●	●	●



616-00	Shorty 180/8	54	✓	✓	✓						✓			✓	✓	●
767-00	Easy 180/8	54	✓	✓	✓						✓			✓	✓	●
762-00	Isar 180/8	55	✓	✓	✓						✓			✓	✓	●
740-00	Merkur 200/8	55	✓	✓	✓	✓			✓	✓	✓			✓	✓	●
611-..	Avellino 180x130	55		▲		✓			▲	▲				●	●	●
707-..	Napoli 270/6	56		▲		✓	✓	✓		▲		✓		●		
625-..	Bergamo 300/6	56		▲		✓	✓	✓		▲		✓				

- ✓ Possible combination
- ▲ Additional fastening on balcony rail is necessary!
- Additional fastening necessary by parasol stand or second parasol holder!





**Xaver Schneider GmbH & Co. KG**

Obereschring 1 • 88512 Mengen • Deutschland  
Telefon +49 (0) 7572 7636-0  
Telefax +49 (0) 7572 7636-126

info@schneider-schirme.com  
www.schneider-schirme.com  
www.schneider-werbeschirme.com

Visit us also at:



Website



Online catalogue



All dimensions are  
approximate!  
Subject to colour and  
size deviations, as well as  
technical modifications.